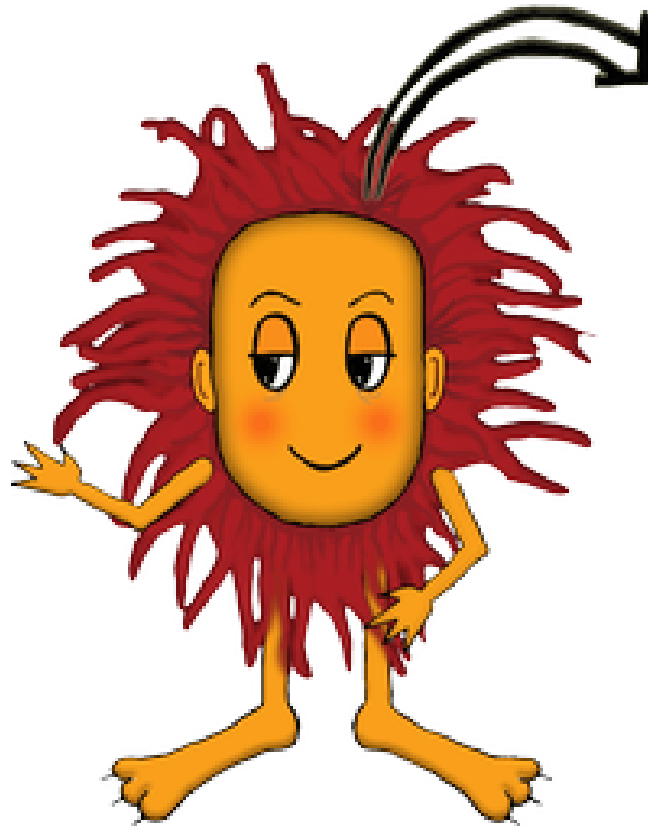


Velika logična pošast



Odštevanje decimalnih števil

Izračunaj razliko.

1.

x	y	$x-y$
9.010	2.016	
9.041	4.36	
6.04	1.062	
6.0063	3.0040	
8.012	1.0001	
7.20	4.024	
9.0024	4.36	
5.0064	1.031	
6.48	2.08	
6.0010	1.0006	
9.0007	2.0004	
9.042	4.006	
8.28	1.42	
9.0062	2.36	
6.002	2.0001	
7.0008	3.001	
8.10	1.64	
6.31	3.010	
6.022	2.020	
9.10	4.0011	
7.062	3.006	
6.0055	3.0019	
5.011	1.0052	
7.0055	1.037	

2.

x	y	$x-y$
6.0007	3.0052	
7.18	3.42	
7.0014	4.0033	
5.32	4.009	
6.10	2.0014	
8.059	2.58	
9.20	2.005	
7.16	2.0005	
6.004	1.022	
6.0024	4.14	
7.002	4.0002	
5.011	3.30	
7.19	1.0040	
9.0058	4.0030	
5.0030	1.029	
8.0016	3.020	
7.18	4.58	
5.027	4.05	
5.048	2.0063	
5.20	4.0036	
6.0002	1.018	
6.0039	4.11	
7.08	4.21	
9.11	2.79	

3.

x	y	$x-y$
8.33	3.079	
5.0070	1.023	
5.015	2.010	
6.38	1.39	
6.0064	3.036	
5.005	3.47	
5.041	4.15	
7.0026	2.0060	
6.16	3.0007	
6.0010	4.07	
6.026	3.63	
9.036	3.016	
7.09	2.04	
6.004	2.0038	
6.14	4.0005	
9.0016	4.35	
7.0029	3.11	
9.0045	1.037	
7.10	4.0006	
8.0022	2.0015	
6.020	1.55	
9.014	1.0045	
8.0028	4.19	
8.12	2.017	

4.

x	y	$x-y$
7.05	4.10	
8.043	1.50	
7.0067	3.029	
5.33	1.0033	
5.41	2.021	
7.0020	1.30	
5.053	2.0068	
8.020	2.22	
9.20	3.0009	
9.0002	4.0017	
6.021	1.0005	
8.075	4.0053	
8.77	3.09	
7.01	2.002	
5.0005	1.009	
7.032	1.49	
8.0012	2.005	
6.0029	3.0016	
7.09	3.53	
7.01	2.0001	
5.0005	2.10	
5.12	3.0006	
7.0039	4.0042	
7.0004	2.007	

5.

x	y	$x-y$
5.04	2.0029	
6.0052	4.0071	
8.014	2.36	
6.004	1.0032	
6.15	4.0031	
5.55	1.0049	
9.046	2.0069	
5.0009	4.02	
9.025	3.0025	
5.008	3.08	
9.005	3.0010	
7.0021	3.36	
6.026	1.18	
7.009	2.004	
6.0030	2.0056	
5.0006	1.06	
6.32	3.0042	
9.049	1.078	
7.0016	1.06	
8.04	3.52	
6.0025	1.07	
8.0035	4.001	
6.008	4.57	
7.0002	1.008	

6.

x	y	$x-y$
9.28	3.21	
6.053	3.027	
6.46	1.033	
5.0021	1.020	
8.31	2.030	
8.001	1.0048	
9.022	4.30	
5.0043	1.0015	
5.0028	4.0012	
8.03	3.21	
8.47	1.0075	
8.015	3.0006	
7.30	2.13	
5.0017	4.0026	
9.012	1.0002	
7.0016	4.053	
5.008	2.0030	
8.067	1.05	
7.052	4.057	
7.031	3.052	
9.0015	1.05	
8.0021	4.0021	
9.13	2.11	
6.14	3.023	

7.

x	y	$x-y$
5.003	4.08	
8.011	4.0041	
8.0003	2.01	
9.0045	1.0049	
7.0026	3.0024	
8.09	2.007	
9.0037	1.06	
5.0022	3.29	
6.0006	2.19	
7.42	4.36	
6.0059	2.0047	
8.01	4.021	
7.0031	3.0041	
5.03	1.0009	
8.07	1.024	
6.0023	2.0005	
6.019	3.032	
8.015	2.019	
6.0015	2.0006	
8.023	2.16	
8.047	4.0027	
8.0007	2.0020	
7.0047	1.0052	
9.0048	3.53	

8.

x	y	$x-y$
8.24	3.0019	
5.008	2.0002	
5.06	3.03	
6.035	3.45	
8.023	2.034	
5.25	4.0078	
5.032	4.059	
5.07	2.0017	
6.40	3.0042	
5.04	2.0026	
9.0020	1.009	
9.0009	2.0033	
5.0007	2.025	
6.019	4.0066	
6.0042	4.0022	
5.08	2.0068	
8.0014	1.20	
5.0019	1.0019	
9.0040	1.40	
9.011	4.015	
7.0039	4.012	
7.01	2.13	
7.70	2.45	
6.48	2.055	

9.

x	y	$x-y$
8.009	2.0014	
8.07	1.004	
7.07	1.13	
5.029	4.35	
5.043	2.38	
7.29	1.0024	
6.0020	1.007	
5.054	3.003	
9.0032	2.029	
6.0002	3.27	
8.0004	1.49	
6.010	4.0065	
6.055	3.12	
6.10	1.007	
7.025	4.0002	
6.0027	2.0039	
7.0002	1.27	
6.26	1.17	
8.34	1.038	
5.0049	4.0015	
5.0025	3.050	
8.004	4.09	
7.043	4.001	
8.012	2.008	

10.

x	y	$x-y$
9.0008	2.030	
8.043	1.0034	
8.07	1.010	
7.021	2.30	
6.0060	1.84	
8.64	1.72	
8.14	3.016	
7.022	2.71	
7.35	2.013	
5.0023	2.0046	
8.039	4.0030	
9.13	2.009	
6.0006	4.0075	
8.0011	3.17	
8.009	4.029	
8.003	1.47	
6.014	1.21	
6.008	4.080	
7.0018	4.41	
7.007	1.63	
8.16	4.002	
7.0023	3.0048	
6.0033	2.0067	
6.046	2.46	

11.

x	y	$x-y$
7.0026	2.0020	
6.39	4.0065	
9.12	1.0005	
8.0018	1.022	
9.007	2.12	
8.0026	3.032	
5.42	1.0069	
6.0004	3.0026	
7.0023	2.26	
6.020	3.31	
8.07	2.013	
7.062	4.076	
7.012	3.012	
6.063	3.018	
6.86	2.053	
8.020	1.02	
9.006	2.0005	
5.010	2.028	
6.021	3.03	
6.016	3.034	
6.0006	3.01	
5.09	4.01	
5.18	2.0022	
9.0029	1.0021	

12.

x	y	$x-y$
6.0005	1.005	
7.0036	1.0056	
8.11	3.047	
6.0059	3.58	
5.020	3.0040	
5.11	4.0012	
9.028	1.37	
9.11	4.005	
8.003	3.008	
6.0026	4.0023	
6.20	1.0003	
8.02	2.21	
9.008	4.0013	
8.35	2.78	
8.011	3.051	
7.0007	3.14	
9.0019	1.015	
6.028	2.13	
6.040	4.38	
5.54	1.014	
9.09	2.0029	
5.008	3.0019	
9.055	2.0066	
6.0034	3.0001	

13.

x	y	$x-y$
6.0017	4.031	
8.17	3.0003	
9.031	3.09	
6.07	3.0025	
6.044	3.003	
7.40	2.049	
6.0048	1.049	
9.0009	1.0001	
7.044	4.0063	
9.43	3.069	
7.15	3.23	
6.24	4.008	
5.002	2.005	
8.002	4.72	
6.27	4.15	
7.0030	1.02	
6.43	4.13	
6.015	4.0014	
5.081	2.08	
8.0005	4.0016	
8.06	1.02	
5.48	3.067	
6.002	3.065	
8.05	2.002	

14.

x	y	$x-y$
5.0011	1.007	
7.019	2.018	
8.0002	4.015	
8.29	3.067	
7.33	4.040	
5.007	2.0018	
9.016	3.004	
7.070	1.033	
5.0008	2.03	
5.16	1.040	
7.062	4.22	
6.03	4.12	
8.002	1.04	
9.040	4.0031	
9.012	3.05	
6.021	4.15	
7.05	2.21	
7.010	1.02	
7.09	2.68	
5.0032	4.020	
9.0029	4.0016	
6.10	3.10	
8.0031	1.0008	
8.34	1.35	

15.

x	y	$x-y$
6.0001	2.08	
6.0050	2.0048	
7.026	3.0042	
6.0053	2.0009	
7.0041	3.030	
9.09	2.22	
7.013	3.0028	
6.036	1.0036	
9.28	2.17	
6.13	4.06	
9.0009	1.0002	
5.06	3.20	
5.066	3.026	
9.42	4.0030	
7.042	4.041	
9.019	2.0065	
5.0016	2.0010	
6.016	1.050	
7.0013	4.17	
7.0013	4.008	
5.049	3.0018	
7.15	3.003	
5.008	3.008	
9.08	3.0001	

16.

x	y	$x-y$
7.010	3.003	
7.0008	1.02	
9.08	4.016	
5.0088	1.0051	
8.06	3.0068	
6.0022	2.0026	
9.0027	3.0009	
7.0069	2.0025	
6.61	2.0045	
5.0033	3.020	
7.008	1.021	
9.064	4.53	
9.21	2.034	
7.12	4.0029	
6.004	4.008	
5.47	1.036	
8.004	2.007	
5.0003	3.0036	
9.01	1.041	
9.0066	2.0070	
6.031	4.0007	
8.57	3.0046	
6.0013	3.028	
8.33	2.0036	

17.

x	y	$x-y$
6.04	2.0018	
8.0011	2.017	
7.01	1.0040	
5.78	2.0003	
6.014	2.0041	
8.02	2.01	
8.015	2.03	
8.036	4.33	
7.0010	4.09	
8.062	2.0040	
9.24	4.007	
6.023	2.0014	
6.10	2.032	
7.006	4.13	
8.23	1.048	
6.0012	1.62	
7.04	3.029	
6.0032	1.075	
6.0058	3.19	
8.0003	4.0036	
6.034	2.0030	
6.0022	3.0004	
9.0051	2.0041	
9.10	4.0051	

18.

x	y	$x-y$
8.0015	4.05	
9.0021	3.19	
9.0084	3.076	
8.15	4.0009	
9.65	1.015	
5.28	2.0078	
9.84	2.084	
9.0016	2.0031	
5.0068	3.0068	
7.38	2.0018	
8.0006	3.0002	
7.011	2.0005	
9.40	1.040	
9.26	4.009	
9.031	4.037	
8.0020	4.0016	
7.0008	1.035	
9.0025	2.01	
8.0035	2.16	
5.057	4.0012	
5.049	2.28	
5.38	3.025	
7.0006	3.0007	
9.0036	4.23	

19.

x	y	$x-y$
7.45	1.0014	
7.0008	2.007	
6.10	3.10	
7.0021	4.034	
8.015	4.0020	
5.25	1.0036	
6.0023	4.62	
6.13	1.37	
8.0047	1.29	
6.017	2.13	
9.013	3.001	
6.0024	3.042	
5.40	4.0069	
5.024	1.075	
9.001	2.0008	
6.049	3.11	
7.25	1.0047	
6.59	3.065	
8.015	3.0015	
9.0056	3.25	
5.0028	1.0053	
8.50	2.42	
9.15	2.012	
5.011	4.0001	

20.

x	y	$x-y$
7.40	1.33	
7.0014	2.0002	
5.0005	4.0013	
8.003	3.0070	
7.027	3.0012	
5.015	3.002	
7.0024	3.30	
9.0007	3.031	
7.0029	3.014	
7.0007	3.11	
9.32	3.50	
5.14	2.16	
9.16	3.0017	
9.068	1.082	
9.0052	2.49	
9.059	3.0054	
8.0002	3.68	
6.40	1.0007	
5.70	3.021	
8.28	4.001	
5.001	1.15	
7.66	4.074	
7.0016	3.23	
7.0024	3.0066	

21.

x	y	$x-y$
6.0057	2.30	
6.0062	4.83	
5.24	4.04	
8.58	3.31	
6.0046	4.049	
8.0011	3.014	
6.33	1.036	
9.004	1.0049	
9.018	4.0034	
7.0029	1.0041	
7.01	2.0008	
9.0011	1.041	
6.10	3.79	
5.042	3.027	
8.02	4.13	
5.53	1.14	
5.31	2.0027	
9.86	2.057	
8.0010	3.0014	
9.13	1.044	
8.0010	3.010	
9.020	1.12	
7.0060	3.065	
9.0027	2.52	

22.

x	y	$x-y$
6.0010	1.56	
6.033	1.29	
8.0017	2.012	
7.18	4.68	
8.029	3.01	
6.0004	3.002	
7.10	3.0012	
5.0012	3.005	
5.11	3.0015	
5.030	4.0020	
7.0072	2.74	
9.61	3.084	
9.0008	1.0007	
6.010	1.0018	
6.0029	1.20	
6.62	4.0068	
8.08	3.37	
8.009	4.0005	
8.0048	4.026	
5.04	4.0006	
5.59	4.056	
6.0020	4.08	
7.016	1.030	
5.028	2.004	

23.

x	y	$x-y$
7.0025	3.052	
8.018	2.20	
8.011	2.013	
8.21	4.18	
7.0012	2.001	
7.04	4.0010	
7.002	3.31	
5.0025	2.0051	
8.18	3.07	
8.0040	4.0024	
7.0030	4.0026	
8.01	1.0007	
9.60	1.0007	
5.059	1.056	
7.0053	1.0062	
7.087	1.033	
9.19	1.005	
5.008	2.0012	
6.0018	1.0026	
5.0001	4.0004	
5.69	2.029	
8.0046	2.073	
6.031	3.27	
7.004	4.0010	

24.

x	y	$x-y$
6.0009	4.011	
9.0002	4.0005	
9.04	3.17	
5.011	3.0011	
9.0010	3.10	
8.07	4.004	
5.0019	3.85	
7.0014	2.0019	
9.0047	1.09	
8.044	1.32	
6.048	1.040	
5.0084	3.018	
5.020	3.0031	
7.0003	1.0012	
9.034	3.26	
8.16	3.0038	
6.08	3.020	
7.005	3.27	
7.0020	3.0055	
5.0017	2.12	
5.0038	1.17	
6.029	1.050	
6.032	2.28	
5.08	3.0003	

25.

x	y	$x-y$
9.0022	3.021	
6.10	4.16	
8.22	3.30	
6.04	4.22	
8.0047	3.09	
7.0012	2.0045	
6.0006	1.036	
7.0006	3.11	
6.0033	3.039	
6.0076	4.028	
5.26	2.019	
9.45	1.55	
9.025	1.047	
6.21	1.024	
9.0035	1.28	
5.27	4.0072	
5.0007	3.15	
8.31	1.0073	
7.17	4.0009	
5.27	3.0036	
5.0056	1.0017	
7.0019	2.0022	
6.030	2.13	
5.37	3.038	

26.

x	y	$x-y$
9.020	2.0059	
8.0005	4.0004	
8.019	1.049	
7.051	2.0042	
5.010	2.65	
8.001	3.56	
6.09	2.006	
6.014	1.23	
7.26	1.0021	
6.55	2.055	
7.0013	4.02	
5.0018	3.0025	
8.16	3.07	
9.42	3.14	
7.11	2.13	
6.51	2.044	
8.19	2.05	
8.17	4.23	
8.05	3.06	
5.49	1.51	
8.012	2.0008	
9.0029	3.07	
9.0007	4.040	
9.042	2.43	

27.

x	y	$x-y$
7.0007	1.31	
9.060	1.064	
8.12	1.27	
6.048	3.79	
7.75	2.069	
7.13	4.0019	
9.32	1.016	
9.044	2.0029	
9.0017	4.0026	
5.018	2.026	
7.0027	2.39	
9.0044	2.41	
8.045	3.15	
5.015	4.18	
6.62	2.013	
7.016	3.0042	
5.065	3.33	
8.40	2.37	
9.03	4.12	
5.28	3.44	
5.025	1.04	
5.0043	1.027	
6.0008	3.11	
8.018	4.03	

28.

x	y	$x-y$
8.039	3.0002	
7.0030	2.34	
6.0003	2.09	
9.040	2.008	
7.0064	1.02	
9.014	1.16	
7.18	3.007	
6.50	1.71	
8.0002	3.008	
6.10	1.0003	
6.078	1.0063	
8.003	1.0051	
9.0009	4.20	
6.0054	1.38	
6.008	3.38	
6.0004	1.011	
9.01	1.24	
7.0008	1.11	
9.01	4.002	
5.25	1.54	
5.014	4.0048	
6.35	4.27	
5.0066	4.47	
6.013	3.0003	

29.

x	y	$x-y$
5.048	4.32	
6.10	1.0038	
5.0006	4.0022	
6.0008	3.01	
7.0024	4.0027	
7.47	2.03	
5.001	1.50	
6.0024	4.0024	
6.017	4.14	
9.0031	3.11	
5.0001	2.10	
9.016	4.015	
8.0003	4.0020	
9.022	3.32	
8.02	1.06	
7.0050	2.051	
9.51	1.0033	
7.017	1.06	
5.0005	1.010	
9.12	3.032	
5.12	3.06	
5.0004	1.061	
8.19	1.28	
6.09	4.043	

30.

x	y	$x-y$
6.40	1.11	
7.0032	2.005	
8.0024	2.37	
7.50	1.29	
7.07	4.046	
6.10	2.29	
9.44	1.019	
7.04	2.041	
7.007	1.0007	
7.66	2.067	
6.035	2.04	
6.0024	3.28	
8.23	4.051	
8.33	4.017	
5.0057	2.037	
8.027	1.030	
7.0062	3.77	
9.0004	1.0009	
9.005	3.0020	
8.05	4.0001	
7.055	4.050	
8.0042	3.0053	
5.037	3.067	
5.52	2.0045	

Rešitve:

1.

x	y	$x-y$
9.010	2.016	6.994
9.041	4.36	4.681
6.04	1.062	4.978
6.0063	3.0040	3.0023
8.012	1.0001	7.0119
7.20	4.024	3.176
9.0024	4.36	4.6424
5.0064	1.031	3.9754
6.48	2.08	4.40
6.0010	1.0006	5.0004
9.0007	2.0004	7.0003
9.042	4.006	5.036
8.28	1.42	6.86
9.0062	2.36	6.6462
6.002	2.0001	4.0019
7.0008	3.001	3.9998
8.10	1.64	6.46
6.31	3.010	3.300
6.022	2.020	4.002
9.10	4.0011	5.0989
7.062	3.006	4.056
6.0055	3.0019	3.0036
5.011	1.0052	4.0058
7.0055	1.037	5.9685

2.

x	y	$x-y$
6.0007	3.0052	2.9955
7.18	3.42	3.76
7.0014	4.0033	2.9981
5.32	4.009	1.311
6.10	2.0014	4.0986
8.059	2.58	5.479
9.20	2.005	7.195
7.16	2.0005	5.1595
6.004	1.022	4.982
6.0024	4.14	1.8624
7.002	4.0002	3.0018
5.011	3.30	1.711
7.19	1.0040	6.1860
9.0058	4.0030	5.0028
5.0030	1.029	3.9740
8.0016	3.020	4.9816
7.18	4.58	2.60
5.027	4.05	0.977
5.048	2.0063	3.0417
5.20	4.0036	1.1964
6.0002	1.018	4.9822
6.0039	4.11	1.8939
7.08	4.21	2.87
9.11	2.79	6.32

3.

x	y	$x-y$
8.33	3.079	5.251
5.0070	1.023	3.9840
5.015	2.010	3.005
6.38	1.39	4.99
6.0064	3.036	2.9704
5.005	3.47	1.535
5.041	4.15	0.891
7.0026	2.0060	4.9966
6.16	3.0007	3.1593
6.0010	4.07	1.9310
6.026	3.63	2.396
9.036	3.016	6.020
7.09	2.04	5.05
6.004	2.0038	4.0002
6.14	4.0005	2.1395
9.0016	4.35	4.6516
7.0029	3.11	3.8929
9.0045	1.037	7.9675
7.10	4.0006	3.0994
8.0022	2.0015	6.0007
6.020	1.55	4.470
9.014	1.0045	8.0095
8.0028	4.19	3.8128
8.12	2.017	6.103

4.

x	y	$x-y$
7.05	4.10	2.95
8.043	1.50	6.543
7.0067	3.029	3.9777
5.33	1.0033	4.3267
5.41	2.021	3.389
7.0020	1.30	5.7020
5.053	2.0068	3.0462
8.020	2.22	5.800
9.20	3.0009	6.1991
9.0002	4.0017	4.9985
6.021	1.0005	5.0205
8.075	4.0053	4.0697
8.77	3.09	5.68
7.01	2.002	5.008
5.0005	1.009	3.9915
7.032	1.49	5.542
8.0012	2.005	5.9962
6.0029	3.0016	3.0013
7.09	3.53	3.56
7.01	2.0001	5.0099
5.0005	2.10	2.9005
5.12	3.0006	2.1194
7.0039	4.0042	2.9997
7.0004	2.007	4.9934

5.

x	y	$x-y$
5.04	2.0029	3.0371
6.0052	4.0071	1.9981
8.014	2.36	5.654
6.004	1.0032	5.0008
6.15	4.0031	2.1469
5.55	1.0049	4.5451
9.046	2.0069	7.0391
5.0009	4.02	0.9809
9.025	3.0025	6.0225
5.008	3.08	1.928
9.005	3.0010	6.0040
7.0021	3.36	3.6421
6.026	1.18	4.846
7.009	2.004	5.005
6.0030	2.0056	3.9974
5.0006	1.06	3.9406
6.32	3.0042	3.3158
9.049	1.078	7.971
7.0016	1.06	5.9416
8.04	3.52	4.52
6.0025	1.07	4.9325
8.0035	4.001	4.0025
6.008	4.57	1.438
7.0002	1.008	5.9922

6.

x	y	$x-y$
9.28	3.21	6.07
6.053	3.027	3.026
6.46	1.033	5.427
5.0021	1.020	3.9821
8.31	2.030	6.280
8.001	1.0048	6.9962
9.022	4.30	4.722
5.0043	1.0015	4.0028
5.0028	4.0012	1.0016
8.03	3.21	4.82
8.47	1.0075	7.4625
8.015	3.0006	5.0144
7.30	2.13	5.17
5.0017	4.0026	0.9991
9.012	1.0002	8.0118
7.0016	4.053	2.9486
5.008	2.0030	3.0050
8.067	1.05	7.017
7.052	4.057	2.995
7.031	3.052	3.979
9.0015	1.05	7.9515
8.0021	4.0021	4.0000
9.13	2.11	7.02
6.14	3.023	3.117

7.

x	y	$x-y$
5.003	4.08	0.923
8.011	4.0041	4.0069
8.0003	2.01	5.9903
9.0045	1.0049	7.9996
7.0026	3.0024	4.0002
8.09	2.007	6.083
9.0037	1.06	7.9437
5.0022	3.29	1.7122
6.0006	2.19	3.8106
7.42	4.36	3.06
6.0059	2.0047	4.0012
8.01	4.021	3.989
7.0031	3.0041	3.9990
5.03	1.0009	4.0291
8.07	1.024	7.046
6.0023	2.0005	4.0018
6.019	3.032	2.987
8.015	2.019	5.996
6.0015	2.0006	4.0009
8.023	2.16	5.863
8.047	4.0027	4.0443
8.0007	2.0020	5.9987
7.0047	1.0052	5.9995
9.0048	3.53	5.4748

8.

x	y	$x-y$
8.24	3.0019	5.2381
5.008	2.0002	3.0078
5.06	3.03	2.03
6.035	3.45	2.585
8.023	2.034	5.989
5.25	4.0078	1.2422
5.032	4.059	0.973
5.07	2.0017	3.0683
6.40	3.0042	3.3958
5.04	2.0026	3.0374
9.0020	1.009	7.9930
9.0009	2.0033	6.9976
5.0007	2.025	2.9757
6.019	4.0066	2.0124
6.0042	4.0022	2.0020
5.08	2.0068	3.0732
8.0014	1.20	6.8014
5.0019	1.0019	4.0000
9.0040	1.40	7.6040
9.011	4.015	4.996
7.0039	4.012	2.9919
7.01	2.13	4.88
7.70	2.45	5.25
6.48	2.055	4.425

9.

x	y	$x-y$
8.009	2.0014	6.0076
8.07	1.004	7.066
7.07	1.13	5.94
5.029	4.35	0.679
5.043	2.38	2.663
7.29	1.0024	6.2876
6.0020	1.007	4.9950
5.054	3.003	2.051
9.0032	2.029	6.9742
6.0002	3.27	2.7302
8.0004	1.49	6.5104
6.010	4.0065	2.0035
6.055	3.12	2.935
6.10	1.007	5.093
7.025	4.0002	3.0248
6.0027	2.0039	3.9988
7.0002	1.27	5.7302
6.26	1.17	5.09
8.34	1.038	7.302
5.0049	4.0015	1.0034
5.0025	3.050	1.9525
8.004	4.09	3.914
7.043	4.001	3.042
8.012	2.008	6.004

10.

x	y	$x-y$
9.0008	2.030	6.9708
8.043	1.0034	7.0396
8.07	1.010	7.060
7.021	2.30	4.721
6.0060	1.84	4.1660
8.64	1.72	6.92
8.14	3.016	5.124
7.022	2.71	4.312
7.35	2.013	5.337
5.0023	2.0046	2.9977
8.039	4.0030	4.0360
9.13	2.009	7.121
6.0006	4.0075	1.9931
8.0011	3.17	4.8311
8.009	4.029	3.980
8.003	1.47	6.533
6.014	1.21	4.804
6.008	4.080	1.928
7.0018	4.41	2.5918
7.007	1.63	5.377
8.16	4.002	4.158
7.0023	3.0048	3.9975
6.0033	2.0067	3.9966
6.046	2.46	3.586

11.

x	y	$x-y$
7.0026	2.0020	5.0006
6.39	4.0065	2.3835
9.12	1.0005	8.1195
8.0018	1.022	6.9798
9.007	2.12	6.887
8.0026	3.032	4.9706
5.42	1.0069	4.4131
6.0004	3.0026	2.9978
7.0023	2.26	4.7423
6.020	3.31	2.710
8.07	2.013	6.057
7.062	4.076	2.986
7.012	3.012	4.000
6.063	3.018	3.045
6.86	2.053	4.807
8.020	1.02	7.000
9.006	2.0005	7.0055
5.010	2.028	2.982
6.021	3.03	2.991
6.016	3.034	2.982
6.0006	3.01	2.9906
5.09	4.01	1.08
5.18	2.0022	3.1778
9.0029	1.0021	8.0008

12.

x	y	$x-y$
6.0005	1.005	4.9955
7.0036	1.0056	5.9980
8.11	3.047	5.063
6.0059	3.58	2.4259
5.020	3.0040	2.0160
5.11	4.0012	1.1088
9.028	1.37	7.658
9.11	4.005	5.105
8.003	3.008	4.995
6.0026	4.0023	2.0003
6.20	1.0003	5.1997
8.02	2.21	5.81
9.008	4.0013	5.0067
8.35	2.78	5.57
8.011	3.051	4.960
7.0007	3.14	3.8607
9.0019	1.015	7.9869
6.028	2.13	3.898
6.040	4.38	1.660
5.54	1.014	4.526
9.09	2.0029	7.0871
5.008	3.0019	2.0061
9.055	2.0066	7.0484
6.0034	3.0001	3.0033

13.

x	y	$x-y$
6.0017	4.031	1.9707
8.17	3.0003	5.1697
9.031	3.09	5.941
6.07	3.0025	3.0675
6.044	3.003	3.041
7.40	2.049	5.351
6.0048	1.049	4.9558
9.0009	1.0001	8.0008
7.044	4.0063	3.0377
9.43	3.069	6.361
7.15	3.23	3.92
6.24	4.008	2.232
5.002	2.005	2.997
8.002	4.72	3.282
6.27	4.15	2.12
7.0030	1.02	5.9830
6.43	4.13	2.30
6.015	4.0014	2.0136
5.081	2.08	3.001
8.0005	4.0016	3.9989
8.06	1.02	7.04
5.48	3.067	2.413
6.002	3.065	2.937
8.05	2.002	6.048

14.

x	y	$x-y$
5.0011	1.007	3.9941
7.019	2.018	5.001
8.0002	4.015	3.9852
8.29	3.067	5.223
7.33	4.040	3.290
5.007	2.0018	3.0052
9.016	3.004	6.012
7.070	1.033	6.037
5.0008	2.03	2.9708
5.16	1.040	4.120
7.062	4.22	2.842
6.03	4.12	1.91
8.002	1.04	6.962
9.040	4.0031	5.0369
9.012	3.05	5.962
6.021	4.15	1.871
7.05	2.21	4.84
7.010	1.02	5.990
7.09	2.68	4.41
5.0032	4.020	0.9832
9.0029	4.0016	5.0013
6.10	3.10	3.00
8.0031	1.0008	7.0023
8.34	1.35	6.99

15.

x	y	$x-y$
6.0001	2.08	3.9201
6.0050	2.0048	4.0002
7.026	3.0042	4.0218
6.0053	2.0009	4.0044
7.0041	3.030	3.9741
9.09	2.22	6.87
7.013	3.0028	4.0102
6.036	1.0036	5.0324
9.28	2.17	7.11
6.13	4.06	2.07
9.0009	1.0002	8.0007
5.06	3.20	1.86
5.066	3.026	2.040
9.42	4.0030	5.4170
7.042	4.041	3.001
9.019	2.0065	7.0125
5.0016	2.0010	3.0006
6.016	1.050	4.966
7.0013	4.17	2.8313
7.0013	4.008	2.9933
5.049	3.0018	2.0472
7.15	3.003	4.147
5.008	3.008	2.000
9.08	3.0001	6.0799

16.

x	y	$x-y$
7.010	3.003	4.007
7.0008	1.02	5.9808
9.08	4.016	5.064
5.0088	1.0051	4.0037
8.06	3.0068	5.0532
6.0022	2.0026	3.9996
9.0027	3.0009	6.0018
7.0069	2.0025	5.0044
6.61	2.0045	4.6055
5.0033	3.020	1.9833
7.008	1.021	5.987
9.064	4.53	4.534
9.21	2.034	7.176
7.12	4.0029	3.1171
6.004	4.008	1.996
5.47	1.036	4.434
8.004	2.007	5.997
5.0003	3.0036	1.9967
9.01	1.041	7.969
9.0066	2.0070	6.9996
6.031	4.0007	2.0303
8.57	3.0046	5.5654
6.0013	3.028	2.9733
8.33	2.0036	6.3264

17.

x	y	$x-y$
6.04	2.0018	4.0382
8.0011	2.017	5.9841
7.01	1.0040	6.0060
5.78	2.0003	3.7797
6.014	2.0041	4.0099
8.02	2.01	6.01
8.015	2.03	5.985
8.036	4.33	3.706
7.0010	4.09	2.9110
8.062	2.0040	6.0580
9.24	4.007	5.233
6.023	2.0014	4.0216
6.10	2.032	4.068
7.006	4.13	2.876
8.23	1.048	7.182
6.0012	1.62	4.3812
7.04	3.029	4.011
6.0032	1.075	4.9282
6.0058	3.19	2.8158
8.0003	4.0036	3.9967
6.034	2.0030	4.0310
6.0022	3.0004	3.0018
9.0051	2.0041	7.0010
9.10	4.0051	5.0949

18.

x	y	$x-y$
8.0015	4.05	3.9515
9.0021	3.19	5.8121
9.0084	3.076	5.9324
8.15	4.0009	4.1491
9.65	1.015	8.635
5.28	2.0078	3.2722
9.84	2.084	7.756
9.0016	2.0031	6.9985
5.0068	3.0068	2.0000
7.38	2.0018	5.3782
8.0006	3.0002	5.0004
7.011	2.0005	5.0105
9.40	1.040	8.360
9.26	4.009	5.251
9.031	4.037	4.994
8.0020	4.0016	4.0004
7.0008	1.035	5.9658
9.0025	2.01	6.9925
8.0035	2.16	5.8435
5.057	4.0012	1.0558
5.049	2.28	2.769
5.38	3.025	2.355
7.0006	3.0007	3.9999
9.0036	4.23	4.7736

19.

x	y	$x-y$
7.45	1.0014	6.4486
7.0008	2.007	4.9938
6.10	3.10	3.00
7.0021	4.034	2.9681
8.015	4.0020	4.0130
5.25	1.0036	4.2464
6.0023	4.62	1.3823
6.13	1.37	4.76
8.0047	1.29	6.7147
6.017	2.13	3.887
9.013	3.001	6.012
6.0024	3.042	2.9604
5.40	4.0069	1.3931
5.024	1.075	3.949
9.001	2.0008	7.0002
6.049	3.11	2.939
7.25	1.0047	6.2453
6.59	3.065	3.525
8.015	3.0015	5.0135
9.0056	3.25	5.7556
5.0028	1.0053	3.9975
8.50	2.42	6.08
9.15	2.012	7.138
5.011	4.0001	1.0109

20.

x	y	$x-y$
7.40	1.33	6.07
7.0014	2.0002	5.0012
5.0005	4.0013	0.9992
8.003	3.0070	4.9960
7.027	3.0012	4.0258
5.015	3.002	2.013
7.0024	3.30	3.7024
9.0007	3.031	5.9697
7.0029	3.014	3.9889
7.0007	3.11	3.8907
9.32	3.50	5.82
5.14	2.16	2.98
9.16	3.0017	6.1583
9.068	1.082	7.986
9.0052	2.49	6.5152
9.059	3.0054	6.0536
8.0002	3.68	4.3202
6.40	1.0007	5.3993
5.70	3.021	2.679
8.28	4.001	4.279
5.001	1.15	3.851
7.66	4.074	3.586
7.0016	3.23	3.7716
7.0024	3.0066	3.9958

21.

x	y	$x-y$
6.0057	2.30	3.7057
6.0062	4.83	1.1762
5.24	4.04	1.20
8.58	3.31	5.27
6.0046	4.049	1.9556
8.0011	3.014	4.9871
6.33	1.036	5.294
9.004	1.0049	7.9991
9.018	4.0034	5.0146
7.0029	1.0041	5.9988
7.01	2.0008	5.0092
9.0011	1.041	7.9601
6.10	3.79	2.31
5.042	3.027	2.015
8.02	4.13	3.89
5.53	1.14	4.39
5.31	2.0027	3.3073
9.86	2.057	7.803
8.0010	3.0014	4.9996
9.13	1.044	8.086
8.0010	3.010	4.9910
9.020	1.12	7.900
7.0060	3.065	3.9410
9.0027	2.52	6.4827

22.

x	y	$x-y$
6.0010	1.56	4.4410
6.033	1.29	4.743
8.0017	2.012	5.9897
7.18	4.68	2.50
8.029	3.01	5.019
6.0004	3.002	2.9984
7.10	3.0012	4.0988
5.0012	3.005	1.9962
5.11	3.0015	2.1085
5.030	4.0020	1.0280
7.0072	2.74	4.2672
9.61	3.084	6.526
9.0008	1.0007	8.0001
6.010	1.0018	5.0082
6.0029	1.20	4.8029
6.62	4.0068	2.6132
8.08	3.37	4.71
8.009	4.0005	4.0085
8.0048	4.026	3.9788
5.04	4.0006	1.0394
5.59	4.056	1.534
6.0020	4.08	1.9220
7.016	1.030	5.986
5.028	2.004	3.024

23.

x	y	$x-y$
7.0025	3.052	3.9505
8.018	2.20	5.818
8.011	2.013	5.998
8.21	4.18	4.03
7.0012	2.001	5.0002
7.04	4.0010	3.0390
7.002	3.31	3.692
5.0025	2.0051	2.9974
8.18	3.07	5.11
8.0040	4.0024	4.0016
7.0030	4.0026	3.0004
8.01	1.0007	7.0093
9.60	1.0007	8.5993
5.059	1.056	4.003
7.0053	1.0062	5.9991
7.087	1.033	6.054
9.19	1.005	8.185
5.008	2.0012	3.0068
6.0018	1.0026	4.9992
5.0001	4.0004	0.9997
5.69	2.029	3.661
8.0046	2.073	5.9316
6.031	3.27	2.761
7.004	4.0010	3.0030

24.

x	y	$x-y$
6.0009	4.011	1.9899
9.0002	4.0005	4.9997
9.04	3.17	5.87
5.011	3.0011	2.0099
9.0010	3.10	5.9010
8.07	4.004	4.066
5.0019	3.85	1.1519
7.0014	2.0019	4.9995
9.0047	1.09	7.9147
8.044	1.32	6.724
6.048	1.040	5.008
5.0084	3.018	1.9904
5.020	3.0031	2.0169
7.0003	1.0012	5.9991
9.034	3.26	5.774
8.16	3.0038	5.1562
6.08	3.020	3.060
7.005	3.27	3.735
7.0020	3.0055	3.9965
5.0017	2.12	2.8817
5.0038	1.17	3.8338
6.029	1.050	4.979
6.032	2.28	3.752
5.08	3.0003	2.0797

25.

x	y	$x-y$
9.0022	3.021	5.9812
6.10	4.16	1.94
8.22	3.30	4.92
6.04	4.22	1.82
8.0047	3.09	4.9147
7.0012	2.0045	4.9967
6.0006	1.036	4.9646
7.0006	3.11	3.8906
6.0033	3.039	2.9643
6.0076	4.028	1.9796
5.26	2.019	3.241
9.45	1.55	7.90
9.025	1.047	7.978
6.21	1.024	5.186
9.0035	1.28	7.7235
5.27	4.0072	1.2628
5.0007	3.15	1.8507
8.31	1.0073	7.3027
7.17	4.0009	3.1691
5.27	3.0036	2.2664
5.0056	1.0017	4.0039
7.0019	2.0022	4.9997
6.030	2.13	3.900
5.37	3.038	2.332

26.

x	y	$x-y$
9.020	2.0059	7.0141
8.0005	4.0004	4.0001
8.019	1.049	6.970
7.051	2.0042	5.0468
5.010	2.65	2.360
8.001	3.56	4.441
6.09	2.006	4.084
6.014	1.23	4.784
7.26	1.0021	6.2579
6.55	2.055	4.495
7.0013	4.02	2.9813
5.0018	3.0025	1.9993
8.16	3.07	5.09
9.42	3.14	6.28
7.11	2.13	4.98
6.51	2.044	4.466
8.19	2.05	6.14
8.17	4.23	3.94
8.05	3.06	4.99
5.49	1.51	3.98
8.012	2.0008	6.0112
9.0029	3.07	5.9329
9.0007	4.040	4.9607
9.042	2.43	6.612

27.

x	y	$x-y$
7.0007	1.31	5.6907
9.060	1.064	7.996
8.12	1.27	6.85
6.048	3.79	2.258
7.75	2.069	5.681
7.13	4.0019	3.1281
9.32	1.016	8.304
9.044	2.0029	7.0411
9.0017	4.0026	4.9991
5.018	2.026	2.992
7.0027	2.39	4.6127
9.0044	2.41	6.5944
8.045	3.15	4.895
5.015	4.18	0.835
6.62	2.013	4.607
7.016	3.0042	4.0118
5.065	3.33	1.735
8.40	2.37	6.03
9.03	4.12	4.91
5.28	3.44	1.84
5.025	1.04	3.985
5.0043	1.027	3.9773
6.0008	3.11	2.8908
8.018	4.03	3.988

28.

x	y	$x-y$
8.039	3.0002	5.0388
7.0030	2.34	4.6630
6.0003	2.09	3.9103
9.040	2.008	7.032
7.0064	1.02	5.9864
9.014	1.16	7.854
7.18	3.007	4.173
6.50	1.71	4.79
8.0002	3.008	4.9922
6.10	1.0003	5.0997
6.078	1.0063	5.0717
8.003	1.0051	6.9979
9.0009	4.20	4.8009
6.0054	1.38	4.6254
6.008	3.38	2.628
6.0004	1.011	4.9894
9.01	1.24	7.77
7.0008	1.11	5.8908
9.01	4.002	5.008
5.25	1.54	3.71
5.014	4.0048	1.0092
6.35	4.27	2.08
5.0066	4.47	0.5366
6.013	3.0003	3.0127

29.

x	y	$x-y$
5.048	4.32	0.728
6.10	1.0038	5.0962
5.0006	4.0022	0.9984
6.0008	3.01	2.9908
7.0024	4.0027	2.9997
7.47	2.03	5.44
5.001	1.50	3.501
6.0024	4.0024	2.0000
6.017	4.14	1.877
9.0031	3.11	5.8931
5.0001	2.10	2.9001
9.016	4.015	5.001
8.0003	4.0020	3.9983
9.022	3.32	5.702
8.02	1.06	6.96
7.0050	2.051	4.9540
9.51	1.0033	8.5067
7.017	1.06	5.957
5.0005	1.010	3.9905
9.12	3.032	6.088
5.12	3.06	2.06
5.0004	1.061	3.9394
8.19	1.28	6.91
6.09	4.043	2.047

30.

x	y	$x-y$
6.40	1.11	5.29
7.0032	2.005	4.9982
8.0024	2.37	5.6324
7.50	1.29	6.21
7.07	4.046	3.024
6.10	2.29	3.81
9.44	1.019	8.421
7.04	2.041	4.999
7.007	1.0007	6.0063
7.66	2.067	5.593
6.035	2.04	3.995
6.0024	3.28	2.7224
8.23	4.051	4.179
8.33	4.017	4.313
5.0057	2.037	2.9687
8.027	1.030	6.997
7.0062	3.77	3.2362
9.0004	1.0009	7.9995
9.005	3.0020	6.0030
8.05	4.0001	4.0499
7.055	4.050	3.005
8.0042	3.0053	4.9989
5.037	3.067	1.970
5.52	2.0045	3.5155