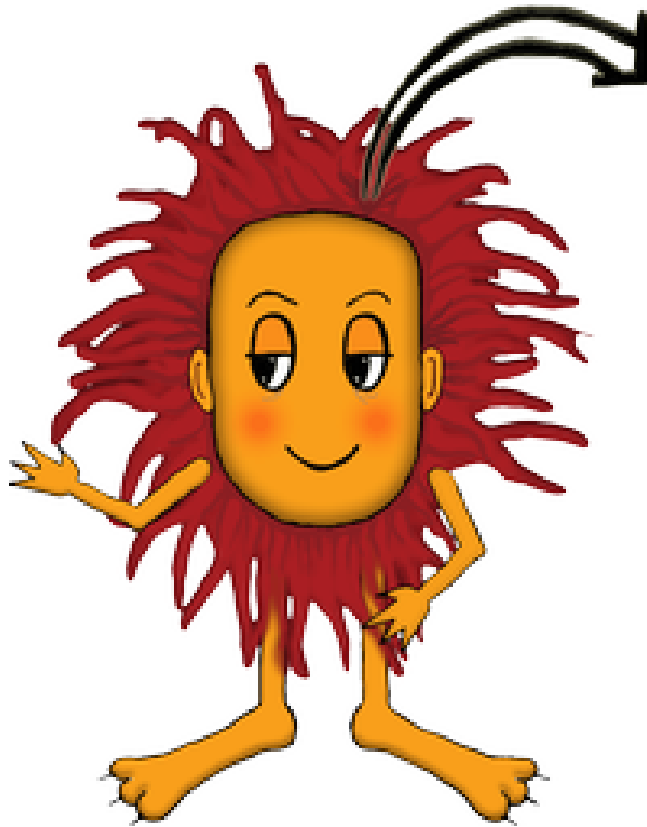


Velika logična pošast



Milimetri, centimetri, decimetri in metri

Izpolni preglednico.

1.

milimetri	16202			4707	609		
m		1	1			1	1
dm		2	6			7	2
cm		5	3			0	1
mm		0	6			3	2

2.

milimetri						1348	17822
m	0	1	1	1	0		
dm	1	1	1	4	7		
cm	5	7	7	7	4		
mm	5	6	3	8	0		

3.

milimetri	10841	7088	1791	12743			19439
m					0	1	
dm					0	6	
cm					2	0	
mm					0	2	

4.

milimetri	13928			13453	14411	16358	
m		0	1				1
dm		6	1				2
cm		0	4				7
mm		6	0				6

5.

milimetri			14518		13230		7501
m	1	0		0		1	
dm	3	3		3		6	
cm	0	0		7		9	
mm	0	8		0		4	

6.

milimetri		7011	6556	12471		8387	1605
m	1				1		
dm	0				5		
cm	5				8		
mm	8				9		

7.

milimetri		13292	4468	2618			17253
m	0				1	1	
dm	5				2	8	
cm	3				5	5	
mm	7				0	3	

8.

milimetri		11291	13099				9524
m	0			1	0	1	
dm	1			3	8	4	
cm	1			2	3	2	
mm	8			9	4	4	

9.

milimetri		2893	12910		16187		5117
m	0			1		1	
dm	1			9		5	
cm	5			7		9	
mm	0			1		0	

10.

milimetri		14412	10202	12943	13582		1077
m	1					1	
dm	4					4	
cm	3					9	
mm	3					9	

11.

milimetri		12 198	10 189		11 005		16 550
m	0			0		1	
dm	0			4		2	
cm	3			5		6	
mm	1			8		2	

12.

milimetri		8842	3983				
m	1			1	1	1	0
dm	1			6	0	2	3
cm	9			3	1	6	6
mm	7			4	2	3	8

13.

milimetri	13 203			10 562		14 681	
m		1	1		0		1
dm		6	2		4		9
cm		7	0		0		3
mm		0	8		6		9

14.

milimetri		14 933		13 753	7 504	15 262	3 279
m	1		1				
dm	7		5				
cm	0		0				
mm	8		3				

15.

milimetri	9 442	15 100	19 309			17 247	
m				0	0		0
dm				5	0		2
cm				4	7		8
mm				4	4		3

16.

milimetri					17495		
m	1	0	1	1		1	1
dm	2	5	0	0		2	6
cm	0	7	7	8		2	5
mm	9	9	3	9		6	2

17.

milimetri					12065	7942	3816
m	0	1	0	0			
dm	8	0	3	7			
cm	0	1	6	0			
mm	7	4	4	7			

18.

milimetri			16843	14219	17389		
m	1	0				1	0
dm	0	0				1	4
cm	6	3				9	2
mm	5	1				6	1

19.

milimetri					14225	16580	
m	0	0	0	1			1
dm	1	3	9	5			1
cm	2	0	3	1			0
mm	2	1	8	9			8

20.

milimetri	17058	11789		4533	14152	10928	8840
m			0				
dm			6				
cm			8				
mm			3				

21.

milimetri	7664			10653		11471	6678
m		1	1		0		
dm		9	9		6		
cm		6	9		1		
mm		8	5		4		

22.

milimetri	13363	8875	16717			668	1818
m				0	1		
dm				2	8		
cm				1	0		
mm				9	6		

23.

milimetri		4878		13515		443	
m	1		0		1		0
dm	1		9		9		4
cm	7		3		6		6
mm	2		4		0		8

24.

milimetri	9005			10922	17	13405	6487
m		0	0				
dm		4	3				
cm		6	6				
mm		2	3				

25.

milimetri	7826	19076			930	14529	16267
m			1	0			
dm			7	9			
cm			6	8			
mm			4	1			

26.

milimetri				12 285			6199
m	1	0	0		0	1	
dm	5	1	1		0	1	
cm	3	7	1		0	1	
mm	2	1	8		7	4	

27.

milimetri	13 503		10 176		5383	7484	18 738
m		1		0			
dm		3		2			
cm		3		2			
mm		2		4			

28.

milimetri		17 154		3264	5048		
m	1		1			0	1
dm	2		8			5	5
cm	3		9			4	4
mm	8		4			3	8

29.

milimetri		16 535				17 370	
m	1		1	0	1		1
dm	0		8	9	5		3
cm	1		3	9	2		5
mm	8		9	7	3		5

30.

milimetri			16 505	3304	18 376	6685	5340
m	0	1					
dm	3	1					
cm	4	2					
mm	3	9					

Rešitve:

1.

milimetri	16 202	1250	1636	4707	609	1703	1212
m	16	1	1	4	0	1	1
dm	2	2	6	7	6	7	2
cm	0	5	3	0	0	0	1
mm	2	0	6	7	9	3	2

2.

milimetri	155	1176	1173	1478	740	1348	17822
m	0	1	1	1	0	1	17
dm	1	1	1	4	7	3	8
cm	5	7	7	7	4	4	2
mm	5	6	3	8	0	8	2

3.

milimetri	10841	7088	1791	12743	20	1602	19439
m	10	7	1	12	0	1	19
dm	8	0	7	7	0	6	4
cm	4	8	9	4	2	0	3
mm	1	8	1	3	0	2	9

4.

milimetri	13928	606	1140	13453	14411	16358	1276
m	13	0	1	13	14	16	1
dm	9	6	1	4	4	3	2
cm	2	0	4	5	1	5	7
mm	8	6	0	3	1	8	6

5.

milimetri	1300	308	14518	370	13230	1694	7501
m	1	0	14	0	13	1	7
dm	3	3	5	3	2	6	5
cm	0	0	1	7	3	9	0
mm	0	8	8	0	0	4	1

6.

milimetri	1058	7011	6556	12471	1589	8387	1605
m	1	7	6	12	1	8	1
dm	0	0	5	4	5	3	6
cm	5	1	5	7	8	8	0
mm	8	1	6	1	9	7	5

7.

milimetri	537	13292	4468	2618	1250	1853	17253
m	0	13	4	2	1	1	17
dm	5	2	4	6	2	8	2
cm	3	9	6	1	5	5	5
mm	7	2	8	8	0	3	3

8.

milimetri	118	11291	13099	1329	834	1424	9524
m	0	11	13	1	0	1	9
dm	1	2	0	3	8	4	5
cm	1	9	9	2	3	2	2
mm	8	1	9	9	4	4	4

9.

milimetri	150	2893	12910	1971	16187	1590	5117
m	0	2	12	1	16	1	5
dm	1	8	9	9	1	5	1
cm	5	9	1	7	8	9	1
mm	0	3	0	1	7	0	7

10.

milimetri	1433	14412	10202	12943	13582	1499	1077
m	1	14	10	12	13	1	1
dm	4	4	2	9	5	4	0
cm	3	1	0	4	8	9	7
mm	3	2	2	3	2	9	7

11.

milimetri	31	12 198	10 189	458	11 005	1262	16 550
m	0	12	10	0	11	1	16
dm	0	1	1	4	0	2	5
cm	3	9	8	5	0	6	5
mm	1	8	9	8	5	2	0

12.

milimetri	1197	8842	3983	1634	1012	1263	368
m	1	8	3	1	1	1	0
dm	1	8	9	6	0	2	3
cm	9	4	8	3	1	6	6
mm	7	2	3	4	2	3	8

13.

milimetri	13 203	1670	1208	10 562	406	14 681	1939
m	13	1	1	10	0	14	1
dm	2	6	2	5	4	6	9
cm	0	7	0	6	0	8	3
mm	3	0	8	2	6	1	9

14.

milimetri	1708	14 933	1503	13 753	7504	15 262	3279
m	1	14	1	13	7	15	3
dm	7	9	5	7	5	2	2
cm	0	3	0	5	0	6	7
mm	8	3	3	3	4	2	9

15.

milimetri	9442	15 100	19 309	544	74	17 247	283
m	9	15	19	0	0	17	0
dm	4	1	3	5	0	2	2
cm	4	0	0	4	7	4	8
mm	2	0	9	4	4	7	3

16.

milimetri	1209	579	1073	1089	17495	1226	1652
m	1	0	1	1	17	1	1
dm	2	5	0	0	4	2	6
cm	0	7	7	8	9	2	5
mm	9	9	3	9	5	6	2

17.

milimetri	807	1014	364	707	12065	7942	3816
m	0	1	0	0	12	7	3
dm	8	0	3	7	0	9	8
cm	0	1	6	0	6	4	1
mm	7	4	4	7	5	2	6

18.

milimetri	1065	31	16843	14219	17389	1196	421
m	1	0	16	14	17	1	0
dm	0	0	8	2	3	1	4
cm	6	3	4	1	8	9	2
mm	5	1	3	9	9	6	1

19.

milimetri	122	301	938	1519	14225	16580	1108
m	0	0	0	1	14	16	1
dm	1	3	9	5	2	5	1
cm	2	0	3	1	2	8	0
mm	2	1	8	9	5	0	8

20.

milimetri	17058	11789	683	4533	14152	10928	8840
m	17	11	0	4	14	10	8
dm	0	7	6	5	1	9	8
cm	5	8	8	3	5	2	4
mm	8	9	3	3	2	8	0

21.

milimetri	7664	1968	1995	10653	614	11471	6678
m	7	1	1	10	0	11	6
dm	6	9	9	6	6	4	6
cm	6	6	9	5	1	7	7
mm	4	8	5	3	4	1	8

22.

milimetri	13363	8875	16717	219	1806	668	1818
m	13	8	16	0	1	0	1
dm	3	8	7	2	8	6	8
cm	6	7	1	1	0	6	1
mm	3	5	7	9	6	8	8

23.

milimetri	1172	4878	934	13515	1960	443	468
m	1	4	0	13	1	0	0
dm	1	8	9	5	9	4	4
cm	7	7	3	1	6	4	6
mm	2	8	4	5	0	3	8

24.

milimetri	9005	462	363	10922	17	13405	6487
m	9	0	0	10	0	13	6
dm	0	4	3	9	0	4	4
cm	0	6	6	2	1	0	8
mm	5	2	3	2	7	5	7

25.

milimetri	7826	19076	1764	981	930	14529	16267
m	7	19	1	0	0	14	16
dm	8	0	7	9	9	5	2
cm	2	7	6	8	3	2	6
mm	6	6	4	1	0	9	7

26.

milimetri	1532	171	118	12285	7	1114	6199
m	1	0	0	12	0	1	6
dm	5	1	1	2	0	1	1
cm	3	7	1	8	0	1	9
mm	2	1	8	5	7	4	9

27.

milimetri	13503	1332	10176	224	5383	7484	18738
m	13	1	10	0	5	7	18
dm	5	3	1	2	3	4	7
cm	0	3	7	2	8	8	3
mm	3	2	6	4	3	4	8

28.

milimetri	1238	17154	1894	3264	5048	543	1548
m	1	17	1	3	5	0	1
dm	2	1	8	2	0	5	5
cm	3	5	9	6	4	4	4
mm	8	4	4	4	8	3	8

29.

milimetri	1018	16535	1839	997	1523	17370	1355
m	1	16	1	0	1	17	1
dm	0	5	8	9	5	3	3
cm	1	3	3	9	2	7	5
mm	8	5	9	7	3	0	5

30.

milimetri	343	1129	16505	3304	18376	6685	5340
m	0	1	16	3	18	6	5
dm	3	1	5	3	3	6	3
cm	4	2	0	0	7	8	4
mm	3	9	5	4	6	5	0