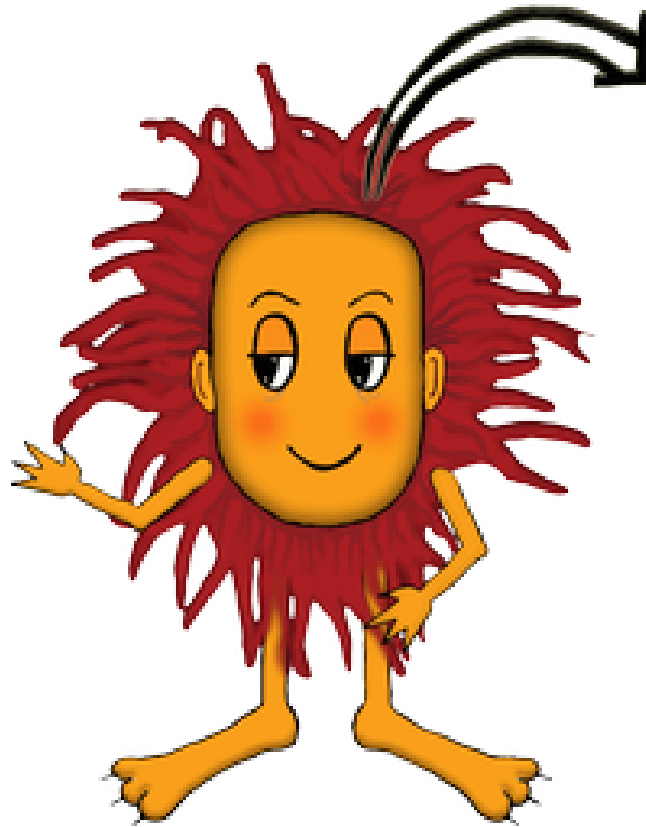


Velika logična pošast



Linearne enačbe

Reši linearne enačbe,  
kjer je neznanka na obeh straneh.

1.

1.	$4 - 4x = 12x - 3$
2.	$11 - 3x = 2x - 90$
3.	$2x + 7 = 4x - 18$
4.	$9 - 6x = 5x - 64$
5.	$7 - 8x = 2x - 66$
6.	$8 - 4x = 7x - 7$
7.	$8 - 8x = 4x - 70$
8.	$1 - 11x = 7x$
9.	$6 - 8x = 7x - 55$
10.	$6 - 9x = 6x - 5$
11.	$3x + 10 = 10x - 9$
12.	$4x + 10 = 8x - 90$
13.	$3 - 6x = 3x - 6$
14.	$7x + 6 = 3x - 15$
15.	$4 - 9x = 5x - 30$
16.	$11x + 9 = 3x - 48$
17.	$9 - 8x = 11x - 32$
18.	$10 - 11x = 7x - 45$
19.	$11 - 5x = 3x - 60$
20.	$2 - 10x = 2x - 4$
21.	$7 - 7x = 10x - 36$
22.	$10 - 5x = 6x - 108$
23.	$4x + 2 = 9x - 7$
24.	$2 - x = 12x - 6$
25.	$11x + 2 = 8x - 6$
26.	$12x + 5 = 5x - 8$
27.	$2 - 11x = 10x - 8$
28.	$12x + 4 = 8x - 36$
29.	$6x + 8 = 10x - 35$
30.	$3 - 3x = 6x - 22$

2.

1.	$8x + 4 = 11x - 33$
2.	$4x + 8 = x - 70$
3.	$10 - 7x = 2x - 63$
4.	$2x + 3 = x - 8$
5.	$3x + 9 = 11x - 72$
6.	$6 - 2x = 2x - 5$
7.	$10x + 3 = 11x - 10$
8.	$8 - 12x = 2x - 35$
9.	$x + 5 = 7x - 28$
10.	$x + 4 = 12x - 15$
11.	$4x + 7 = 10x - 6$
12.	$8 - 11x = 10x - 35$
13.	$2 - 6x = 4x - 5$
14.	$8 - 3x = x - 77$
15.	$10x + 2 = x - 5$
16.	$4 - 5x = 2x - 12$
17.	$12 - 10x = 2x - 121$
18.	$6 - 11x = 2x - 5$
19.	$8 - 8x = 7x - 7$
20.	$6x + 11 = 7x - 30$
21.	$4 - 4x = x - 12$
22.	$9 - 8x = 3x - 72$
23.	$9x + 5 = 12x - 4$
24.	$7x + 9 = 4x - 88$
25.	$2x + 2 = 9x - 3$
26.	$5 - 6x = 6x - 16$
27.	$4x + 3 = 2x - 20$
28.	$10x + 7 = 11x - 36$
29.	$2x + 2 = 7x - 6$
30.	$6 - 6x = 8x - 15$

3.

1.	$9 - 4x = 11x - 32$
2.	$12x + 9 = x - 96$
3.	$4 - 5x = 5x - 18$
4.	$10x + 7 = 11x - 72$
5.	$8 - 4x = 7x - 35$
6.	$2x + 12 = 6x - 44$
7.	$1 - 6x = 12x$
8.	$1 - 6x = 10x$
9.	$8x + 5 = 9x - 40$
10.	$3x + 8 = 8x - 77$
11.	$12x + 11 = x - 40$
12.	$2x + 7 = 5x - 60$
13.	$6 - 3x = 10x - 10$
14.	$6 - 3x = 8x - 60$
15.	$x + 4 = 3x - 15$
16.	$5 - x = 7x - 28$
17.	$9 - 12x = 2x - 56$
18.	$7 - 3x = 12x - 18$
19.	$3x + 2 = 9x - 10$
20.	$4 - 4x = 11x - 27$
21.	$12x + 1 = 10x$
22.	$6x + 8 = 8x - 49$
23.	$2 - 9x = 7x - 10$
24.	$10x + 5 = 11x - 4$
25.	$6x + 6 = 8x - 5$
26.	$6x + 9 = 10x - 64$
27.	$8 - 6x = 3x - 14$
28.	$10x + 2 = x - 5$
29.	$12x + 11 = 2x - 10$
30.	$6x + 9 = 10x - 88$

4.

1.	$9 - 5x = 5x - 56$
2.	$4 - 3x = 3x - 3$
3.	$11 - 2x = 2x - 50$
4.	$9x + 5 = 4x - 20$
5.	$9x + 3 = x - 14$
6.	$11x + 6 = 8x - 30$
7.	$4 - 11x = x - 6$
8.	$8x + 5 = 4x - 40$
9.	$x + 2 = 8x - 9$
10.	$12 - 7x = 3x - 99$
11.	$1 - x = 3x$
12.	$1 - x = x$
13.	$2 - 11x = 6x - 6$
14.	$6 - 7x = x - 15$
15.	$9x + 4 = x - 3$
16.	$5x + 6 = 6x - 50$
17.	$4x + 7 = x - 30$
18.	$9x + 8 = x - 21$
19.	$9 - 3x = 4x - 88$
20.	$12x + 6 = 10x - 60$
21.	$11x + 8 = 12x - 70$
22.	$9x + 4 = 3x - 36$
23.	$x + 4 = 6x - 30$
24.	$10 - 12x = 2x - 90$
25.	$7 - x = 2x - 18$
26.	$9 - 3x = 5x - 8$
27.	$10 - 5x = 12x - 72$
28.	$3x + 9 = 8x - 56$
29.	$9x + 1 = x$
30.	$2x + 9 = 4x - 24$

5.

1.	$8x + 4 = x - 12$
2.	$9x + 6 = 5x - 55$
3.	$6x + 4 = x - 9$
4.	$3 - 2x = 12x - 20$
5.	$9 - 3x = x - 24$
6.	$x + 9 = 5x - 64$
7.	$3x + 7 = x - 18$
8.	$4x + 6 = 5x - 20$
9.	$10x + 7 = 7x - 30$
10.	$3x + 4 = 4x - 33$
11.	$2 - 9x = 12x - 10$
12.	$2 - 8x = 5x - 12$
13.	$1 - 12x = 2x$
14.	$3 - 8x = 6x - 6$
15.	$5x + 2 = 9x - 1$
16.	$6 - 6x = 2x - 5$
17.	$10 - 3x = 8x - 18$
18.	$10 - 7x = 7x - 54$
19.	$4x + 9 = 3x - 8$
20.	$4x + 12 = 9x - 33$
21.	$5x + 5 = 3x - 20$
22.	$5 - 11x = 2x - 8$
23.	$12x + 4 = 11x - 27$
24.	$10 - 6x = 5x - 108$
25.	$8x + 9 = 3x - 16$
26.	$8x + 4 = 12x - 3$
27.	$6 - 4x = 12x - 10$
28.	$1 - 3x = 7x$
29.	$4 - 10x = 11x - 36$
30.	$12 - 9x = 12x - 132$

6.

1.	$12x + 1 = 10x$
2.	$7x + 11 = 5x - 80$
3.	$2 - 3x = 5x - 7$
4.	$5 - 4x = x - 32$
5.	$5x + 11 = 10x - 70$
6.	$x + 1 = 2x$
7.	$2x + 9 = 8x - 80$
8.	$9 - 3x = 2x - 64$
9.	$7 - 5x = 4x - 6$
10.	$7x + 4 = 3x - 12$
11.	$5x + 2 = 7x - 10$
12.	$6x + 6 = 9x - 40$
13.	$2 - 2x = 2x - 4$
14.	$5x + 10 = 6x - 54$
15.	$2 - 3x = 8x - 7$
16.	$8x + 11 = 7x - 40$
17.	$4 - 7x = 6x - 24$
18.	$10 - 11x = 10x - 54$
19.	$x + 3 = 3x - 22$
20.	$2 - 5x = 6x - 9$
21.	$11 - x = 3x - 80$
22.	$4x + 4 = 11x - 33$
23.	$2x + 3 = 11x - 2$
24.	$x + 5 = 2x - 24$
25.	$6x + 1 = x$
26.	$x + 9 = 10x - 40$
27.	$6x + 8 = 9x - 28$
28.	$11x + 7 = 5x - 6$
29.	$8 - x = 6x - 49$
30.	$6 - 12x = 8x - 35$

7.

1.	$4 - 12x = 10x - 24$
2.	$4 - 6x = 4x - 30$
3.	$11 - 8x = 3x - 20$
4.	$8x + 8 = 7x - 7$
5.	$5 - 10x = 7x - 40$
6.	$3x + 2 = 12x - 7$
7.	$2 - 7x = 12x - 10$
8.	$7x + 8 = 9x - 70$
9.	$6 - 10x = 9x - 40$
10.	$10 - 8x = 11x - 45$
11.	$11 - x = 12x - 10$
12.	$7 - 2x = 4x - 30$
13.	$10x + 8 = x - 49$
14.	$11x + 9 = 4x - 64$
15.	$12 - 11x = 3x - 99$
16.	$12 - 3x = 12x - 11$
17.	$4x + 7 = 9x - 30$
18.	$7 - 10x = 12x - 66$
19.	$6x + 8 = 7x - 7$
20.	$5x + 10 = 8x - 18$
21.	$5 - 6x = 2x - 28$
22.	$1 - 6x = 12x$
23.	$12x + 11 = 4x - 110$
24.	$11 - 10x = 6x - 40$
25.	$2 - 9x = 9x - 10$
26.	$x + 7 = 9x - 66$
27.	$5 - 10x = x - 32$
28.	$6x + 6 = 5x - 20$
29.	$10x + 5 = 6x - 28$
30.	$2 - 10x = 3x - 6$



8.

1.	$12x + 9 = 8x - 56$
2.	$11 - 6x = 2x - 30$
3.	$10x + 4 = 9x - 30$
4.	$7x + 1 = 10x$
5.	$12x + 11 = 11x - 110$
6.	$x + 2 = 8x - 9$
7.	$5x + 7 = 3x - 30$
8.	$11x + 6 = 12x - 15$
9.	$6 - 7x = 7x - 35$
10.	$4 - 4x = 10x - 30$
11.	$8 - 8x = 6x - 28$
12.	$9 - 5x = 5x - 48$
13.	$10 - 7x = 11x - 9$
14.	$5x + 10 = x - 72$
15.	$5 - 9x = 9x - 4$
16.	$6 - 2x = 6x - 50$
17.	$2x + 10 = 10x - 36$
18.	$9x + 1 = 7x$
19.	$5x + 10 = 7x - 18$
20.	$2 - x = 9x - 10$
21.	$4x + 12 = 5x - 88$
22.	$8x + 7 = 5x - 18$
23.	$3 - 6x = x - 4$
24.	$3 - 5x = 9x - 12$
25.	$1 - 9x = 9x$
26.	$6x + 6 = 10x - 60$
27.	$7 - 12x = 11x - 42$
28.	$6 - 5x = 7x - 60$
29.	$2x + 3 = 7x - 16$
30.	$3 - 8x = x - 10$

9.

1.	$5x + 6 = 9x - 60$
2.	$10 - 10x = 9x - 27$
3.	$10 - 8x = 4x - 54$
4.	$9 - 2x = 2x - 56$
5.	$1 - 10x = 9x$
6.	$11x + 2 = 5x - 8$
7.	$5 - 5x = 11x - 36$
8.	$3 - 9x = 8x - 2$
9.	$10 - 3x = 12x - 90$
10.	$8 - 12x = 12x - 7$
11.	$7 - 3x = x - 24$
12.	$x + 7 = 6x - 6$
13.	$11 - 9x = 12x - 10$
14.	$12x + 5 = 2x - 44$
15.	$8x + 10 = 9x - 63$
16.	$3x + 11 = 10x - 40$
17.	$8x + 6 = 6x - 25$
18.	$8x + 2 = 2x - 11$
19.	$11 - 11x = 11x - 80$
20.	$8x + 5 = 9x - 44$
21.	$12x + 1 = 9x$
22.	$4x + 12 = 5x - 55$
23.	$3 - 4x = 11x - 4$
24.	$4 - 11x = 12x - 33$
25.	$3 - 9x = 11x - 4$
26.	$2x + 12 = 7x - 88$
27.	$8 - 2x = 7x - 14$
28.	$2x + 6 = 9x - 15$
29.	$7 - 11x = 2x - 18$
30.	$2x + 10 = 9x - 18$

10.

1.	$5 - 10x = 4x - 44$
2.	$x + 8 = 6x - 21$
3.	$10 - 12x = 2x - 81$
4.	$2 - 6x = x - 11$
5.	$6x + 11 = 7x - 40$
6.	$5x + 11 = 6x - 80$
7.	$5 - 11x = x - 24$
8.	$10 - 6x = 10x - 108$
9.	$9x + 8 = 10x - 14$
10.	$5x + 5 = x - 48$
11.	$7 - x = x - 42$
12.	$6 - 2x = 11x - 45$
13.	$9x + 9 = 10x - 8$
14.	$12 - 11x = 11x - 77$
15.	$10 - 7x = 11x - 27$
16.	$3x + 12 = x - 121$
17.	$11x + 12 = 12x - 88$
18.	$11 - 12x = 12x - 80$
19.	$7 - 6x = 10x - 42$
20.	$8 - x = 4x - 70$
21.	$2 - 12x = 10x - 12$
22.	$8 - 10x = 11x - 49$
23.	$11 - 9x = 3x - 70$
24.	$7x + 12 = 5x - 44$
25.	$4 - 8x = 3x - 12$
26.	$9 - 10x = 2x - 56$
27.	$4x + 9 = x - 32$
28.	$4 - 10x = x - 24$
29.	$9x + 5 = 11x - 8$
30.	$7x + 6 = 5x - 45$

## 11.

1.	$9 - 7x = 5x - 48$
2.	$4 - 3x = 8x - 3$
3.	$3 - 3x = 7x - 20$
4.	$12 - 12x = 10x - 22$
5.	$12 - x = 5x - 22$
6.	$10x + 5 = 3x - 44$
7.	$11 - 4x = 10x - 110$
8.	$4x + 10 = x - 108$
9.	$x + 5 = 12x - 16$
10.	$10 - 3x = 12x - 27$
11.	$6x + 2 = 5x - 3$
12.	$2x + 7 = 3x - 60$
13.	$7 - 3x = 11x - 30$
14.	$9 - 9x = x - 96$
15.	$10 - 12x = 9x - 9$
16.	$8 - 7x = 6x - 28$
17.	$2x + 11 = 11x - 60$
18.	$5 - 7x = x - 20$
19.	$2 - x = 8x - 7$
20.	$5 - 6x = 7x - 40$
21.	$9x + 5 = 4x - 24$
22.	$9x + 4 = 12x - 6$
23.	$11x + 6 = 10x - 60$
24.	$3x + 7 = 10x - 66$
25.	$4 - 10x = 2x - 33$
26.	$2 - x = 2x - 10$
27.	$2x + 7 = 10x - 12$
28.	$12x + 9 = 6x - 24$
29.	$8 - x = 11x - 28$
30.	$10x + 9 = 7x - 88$

12.

1.	$2x + 9 = 12x - 48$
2.	$10 - 5x = 11x - 27$
3.	$8 - 10x = 9x - 49$
4.	$3 - 4x = 8x - 20$
5.	$1 - 10x = 11x$
6.	$10 - 7x = 7x - 108$
7.	$8x + 10 = 2x - 9$
8.	$12 - 10x = 10x - 66$
9.	$5x + 12 = 7x - 33$
10.	$4 - 6x = 11x - 24$
11.	$12 - 3x = x - 66$
12.	$10x + 1 = 6x$
13.	$10 - 11x = 3x - 72$
14.	$2 - 3x = 9x - 1$
15.	$4x + 6 = 3x - 5$
16.	$7x + 7 = 12x - 72$
17.	$9x + 9 = 2x - 80$
18.	$6 - 3x = x - 5$
19.	$9x + 10 = 7x - 72$
20.	$7x + 2 = 3x - 4$
21.	$4 - x = 2x - 12$
22.	$6x + 10 = 11x - 9$
23.	$4x + 5 = 8x - 20$
24.	$11x + 7 = 12x - 48$
25.	$6 - 6x = 6x - 35$
26.	$10 - 2x = 6x - 54$
27.	$8x + 6 = 5x - 10$
28.	$11x + 2 = x - 4$
29.	$6 - 3x = 11x - 55$
30.	$11 - 11x = x - 60$

## 13.

1.	$5 - 6x = 12x - 8$
2.	$3x + 1 = x$
3.	$8 - 2x = 4x - 42$
4.	$8 - 12x = 5x - 35$
5.	$5x + 8 = 12x - 21$
6.	$10x + 1 = 3x$
7.	$7x + 11 = 3x - 90$
8.	$4x + 4 = 11x - 33$
9.	$5 - 3x = 3x - 8$
10.	$x + 4 = 4x - 24$
11.	$1 - 4x = 11x$
12.	$7 - 10x = 10x - 54$
13.	$9x + 8 = 7x - 35$
14.	$6x + 10 = 9x - 72$
15.	$11x + 11 = 8x - 40$
16.	$9x + 2 = 10x - 10$
17.	$8x + 7 = 2x - 18$
18.	$11x + 10 = 10x - 54$
19.	$11x + 6 = 4x - 45$
20.	$6 - 4x = 7x - 15$
21.	$x + 11 = 3x - 90$
22.	$6 - 2x = 11x - 5$
23.	$10 - 4x = x - 54$
24.	$3x + 5 = 8x - 12$
25.	$6 - 3x = 11x - 10$
26.	$9 - 8x = 11x - 24$
27.	$1 - 3x = 10x$
28.	$10x + 6 = 11x - 60$
29.	$2 - 7x = 7x - 4$
30.	$6 - 9x = 3x - 45$

14.

1.	$9 - 4x = 4x - 24$
2.	$7x + 5 = 5x - 24$
3.	$11x + 10 = 2x - 108$
4.	$12x + 7 = 7x - 6$
5.	$10x + 11 = x - 40$
6.	$9x + 2 = 8x - 5$
7.	$3x + 5 = 4x - 8$
8.	$10x + 12 = 12x - 55$
9.	$8 - 2x = 4x - 56$
10.	$1 - 10x = 5x$
11.	$2 - 12x = 3x - 4$
12.	$12x + 1 = 3x$
13.	$7 - 12x = 10x - 36$
14.	$10 - 11x = 10x - 45$
15.	$10x + 1 = 11x$
16.	$6 - 7x = 10x - 45$
17.	$11x + 4 = 6x - 3$
18.	$12x + 3 = 11x - 20$
19.	$8x + 2 = x - 6$
20.	$3x + 7 = 12x - 24$
21.	$10 - 5x = 6x - 45$
22.	$x + 7 = 12x - 30$
23.	$9x + 12 = 6x - 99$
24.	$12 - 8x = 3x - 55$
25.	$6x + 4 = 11x - 3$
26.	$3x + 10 = 12x - 36$
27.	$3 - 6x = 7x - 24$
28.	$12x + 12 = 8x - 132$
29.	$11x + 5 = 12x - 36$
30.	$1 - 7x = 5x$

15.

1.	$6 - 11x = 4x - 60$
2.	$4 - 6x = 11x - 9$
3.	$9 - 7x = 8x - 8$
4.	$11 - 11x = 5x - 120$
5.	$7 - 12x = 4x - 72$
6.	$10x + 9 = 12x - 80$
7.	$9 - 8x = 12x - 72$
8.	$5x + 9 = 3x - 56$
9.	$5x + 7 = x - 60$
10.	$3x + 9 = 8x - 48$
11.	$2 - 6x = 5x - 6$
12.	$12x + 4 = 7x - 12$
13.	$5 - 10x = 10x - 44$
14.	$10 - 8x = 2x - 36$
15.	$12x + 1 = 9x$
16.	$1 - x = 10x$
17.	$9x + 10 = 8x - 72$
18.	$11 - 5x = 8x - 70$
19.	$7 - 6x = 5x - 48$
20.	$12 - 12x = 8x - 77$
21.	$x + 12 = 7x - 88$
22.	$10 - 8x = 9x - 99$
23.	$2x + 10 = 8x - 81$
24.	$2x + 1 = 3x$
25.	$8x + 7 = 2x - 12$
26.	$7x + 2 = 8x - 7$
27.	$1 - 5x = 11x$
28.	$1 - x = 2x$
29.	$2 - 3x = 2x - 7$
30.	$8 - 2x = 7x - 70$



16.

1.	$12 - 8x = 8x - 132$
2.	$6 - 3x = 5x - 30$
3.	$4 - 12x = 3x - 18$
4.	$9x + 2 = 6x - 1$
5.	$3 - 5x = 2x - 8$
6.	$8x + 10 = x - 45$
7.	$3 - x = 8x - 16$
8.	$11x + 12 = 10x - 55$
9.	$9 - 9x = 6x - 16$
10.	$6 - 7x = 2x - 50$
11.	$10 - 9x = x - 63$
12.	$2x + 8 = 11x - 21$
13.	$9x + 7 = 3x - 48$
14.	$7x + 10 = 3x - 90$
15.	$9 - 11x = 7x - 88$
16.	$6 - 8x = x - 15$
17.	$10x + 4 = 4x - 18$
18.	$10 - 3x = 11x - 63$
19.	$11x + 5 = 12x - 36$
20.	$1 - 6x = 6x$
21.	$x + 8 = 4x - 77$
22.	$7 - 8x = 12x - 72$
23.	$2 - 9x = 4x - 11$
24.	$4x + 4 = 7x - 33$
25.	$4x + 1 = 7x$
26.	$5 - x = 7x - 40$
27.	$1 - 3x = x$
28.	$x + 4 = 12x - 3$
29.	$6x + 6 = 3x - 15$
30.	$6x + 2 = 3x - 9$

17.

1.	$5 - 9x = 4x - 24$
2.	$2 - 2x = 7x - 1$
3.	$3x + 6 = 7x - 30$
4.	$4 - 7x = x - 21$
5.	$10 - x = 7x - 63$
6.	$8x + 6 = 3x - 40$
7.	$1 - 6x = 11x$
8.	$11 - 9x = 11x - 120$
9.	$2x + 12 = 10x - 121$
10.	$8 - 2x = 12x - 14$
11.	$8 - 4x = 10x - 84$
12.	$8x + 11 = 3x - 70$
13.	$11 - 11x = 3x - 60$
14.	$3 - 12x = 5x - 18$
15.	$10 - 8x = 4x - 45$
16.	$4x + 10 = 9x - 99$
17.	$5x + 3 = 2x - 14$
18.	$10 - 2x = 10x - 9$
19.	$11 - 5x = 7x - 120$
20.	$12x + 9 = 2x - 16$
21.	$2x + 11 = x - 70$
22.	$5 - 7x = 10x - 28$
23.	$8 - x = 11x - 42$
24.	$5x + 4 = 6x - 9$
25.	$12 - 8x = 3x - 77$
26.	$6x + 10 = 5x - 9$
27.	$11x + 10 = 9x - 99$
28.	$8 - 6x = 10x - 56$
29.	$4x + 10 = 5x - 99$
30.	$6 - 9x = 8x - 20$

18.

1.	$x + 3 = 2x - 12$
2.	$4x + 1 = 8x$
3.	$8 - 6x = 9x - 21$
4.	$x + 12 = 9x - 44$
5.	$10 - 2x = 7x - 90$
6.	$1 - 10x = 12x$
7.	$6x + 6 = 2x - 10$
8.	$8x + 7 = 4x - 42$
9.	$5x + 5 = 9x - 20$
10.	$9 - 8x = 4x - 80$
11.	$3x + 9 = 7x - 24$
12.	$8x + 1 = x$
13.	$5 - 11x = 5x - 32$
14.	$10 - 7x = 7x - 18$
15.	$12 - 6x = 2x - 132$
16.	$9 - 11x = 12x - 56$
17.	$2x + 7 = 5x - 36$
18.	$10 - 2x = x - 36$
19.	$6x + 4 = 9x - 3$
20.	$9 - 9x = 2x - 96$
21.	$7x + 4 = 9x - 6$
22.	$2x + 7 = 4x - 42$
23.	$5x + 4 = 2x - 36$
24.	$10 - 9x = 5x - 99$
25.	$7 - 6x = 6x - 12$
26.	$4x + 1 = 8x$
27.	$4x + 6 = 5x - 10$
28.	$12 - x = 7x - 88$
29.	$2x + 2 = 6x - 2$
30.	$9 - 7x = x - 96$

19.

1.	$4x + 1 = x$
2.	$8x + 3 = 7x - 10$
3.	$3x + 9 = 12x - 24$
4.	$1 - 3x = 3x$
5.	$7 - 5x = 10x - 36$
6.	$2 - 10x = x - 2$
7.	$x + 1 = 8x$
8.	$8 - 12x = 11x - 84$
9.	$7 - 11x = 8x - 24$
10.	$5 - 11x = 2x - 48$
11.	$11x + 9 = 3x - 32$
12.	$9x + 7 = 6x - 48$
13.	$x + 3 = 9x - 14$
14.	$5 - 4x = 7x - 32$
15.	$4 - 11x = 10x - 9$
16.	$3 - 8x = 9x - 6$
17.	$4x + 10 = 11x - 9$
18.	$8x + 10 = 9x - 63$
19.	$5 - 2x = 5x - 20$
20.	$7 - 12x = 8x - 42$
21.	$11x + 2 = 12x - 4$
22.	$1 - 9x = 3x$
23.	$11x + 3 = 2x - 2$
24.	$6 - 10x = x - 50$
25.	$4 - 12x = 9x - 27$
26.	$2 - 4x = 9x - 9$
27.	$7 - 11x = 11x - 30$
28.	$5 - 7x = 6x - 4$
29.	$3 - 6x = 10x - 6$
30.	$1 - 11x = 11x$

20.

1.	$9 - 5x = 10x - 24$
2.	$8x + 4 = 12x - 33$
3.	$9 - x = 8x - 16$
4.	$12 - 9x = 9x - 33$
5.	$4 - 7x = 6x - 9$
6.	$5x + 8 = 4x - 56$
7.	$9 - 12x = 7x - 72$
8.	$7 - 2x = 8x - 30$
9.	$4 - 4x = 4x - 18$
10.	$8x + 5 = 12x - 16$
11.	$12 - 12x = 9x - 22$
12.	$10x + 1 = 2x$
13.	$7x + 7 = 9x - 30$
14.	$6x + 7 = 5x - 72$
15.	$2 - 9x = 5x - 9$
16.	$1 - 12x = 3x$
17.	$11 - 2x = 7x - 30$
18.	$3 - 9x = 12x - 10$
19.	$6x + 3 = x - 6$
20.	$2x + 7 = 12x - 36$
21.	$5 - 8x = 12x - 44$
22.	$9 - 7x = 11x - 56$
23.	$4 - 10x = 6x - 12$
24.	$11x + 5 = 3x - 4$
25.	$10x + 10 = 4x - 81$
26.	$6x + 2 = 7x - 6$
27.	$9x + 3 = 5x - 2$
28.	$7x + 8 = 6x - 70$
29.	$10x + 5 = 5x - 32$
30.	$3x + 10 = x - 99$

## 21.

1.	$5x + 12 = 11x - 88$
2.	$5x + 7 = 6x - 6$
3.	$2 - 12x = 4x - 7$
4.	$9 - 7x = 11x - 64$
5.	$6x + 6 = 8x - 60$
6.	$3x + 11 = 6x - 80$
7.	$7 - 11x = 8x - 24$
8.	$12 - 3x = 12x - 88$
9.	$5 - 6x = 2x - 12$
10.	$2x + 8 = 8x - 21$
11.	$11x + 10 = 10x - 36$
12.	$5 - x = 2x - 48$
13.	$7x + 4 = 8x - 6$
14.	$3 - 7x = 3x - 18$
15.	$8x + 1 = x$
16.	$11x + 2 = 3x - 10$
17.	$7x + 6 = 4x - 10$
18.	$9x + 5 = 5x - 44$
19.	$6 - 4x = 8x - 25$
20.	$8 - 12x = 10x - 7$
21.	$10x + 3 = x - 14$
22.	$11x + 6 = 12x - 20$
23.	$6x + 7 = 7x - 24$
24.	$8 - 11x = 9x - 7$
25.	$5x + 9 = 4x - 8$
26.	$5 - 4x = 2x - 44$
27.	$11x + 7 = 10x - 72$
28.	$9x + 8 = 10x - 14$
29.	$2 - 3x = 5x - 6$
30.	$3 - 9x = 7x - 20$

22.

1.	$8x + 12 = 10x - 132$
2.	$1 - 5x = 8x$
3.	$4 - 12x = x - 33$
4.	$6 - 10x = x - 30$
5.	$10x + 4 = 7x - 36$
6.	$6x + 3 = 10x - 2$
7.	$10x + 10 = 5x - 27$
8.	$2x + 7 = 12x - 36$
9.	$12 - 11x = 4x - 33$
10.	$5 - 8x = 11x - 32$
11.	$5x + 3 = 12x - 6$
12.	$2x + 3 = 10x - 4$
13.	$3x + 10 = 9x - 90$
14.	$7x + 8 = 3x - 70$
15.	$4x + 1 = 2x$
16.	$2 - 12x = 11x - 4$
17.	$x + 11 = 2x - 50$
18.	$10 - 5x = 10x - 27$
19.	$2x + 5 = 3x - 40$
20.	$8x + 10 = 9x - 18$
21.	$x + 2 = 11x - 12$
22.	$9x + 7 = 3x - 36$
23.	$8x + 5 = x - 24$
24.	$11x + 6 = 12x - 5$
25.	$7x + 2 = 2x - 3$
26.	$3 - 10x = 3x - 14$
27.	$x + 7 = 3x - 48$
28.	$3x + 6 = 8x - 60$
29.	$7 - 11x = 11x - 18$
30.	$4x + 11 = 10x - 70$

23.

1.	$7x + 3 = 8x - 8$
2.	$5 - 2x = 6x - 12$
3.	$1 - 3x = 5x$
4.	$7x + 1 = 3x$
5.	$8 - 9x = 2x - 56$
6.	$8 - x = x - 49$
7.	$1 - 5x = 12x$
8.	$6 - 6x = 8x - 45$
9.	$x + 12 = 11x - 44$
10.	$3x + 1 = 8x$
11.	$4x + 12 = 10x - 77$
12.	$6 - 3x = x - 20$
13.	$5 - x = 9x - 20$
14.	$8 - 6x = 4x - 84$
15.	$4 - 11x = 9x - 9$
16.	$7x + 1 = 10x$
17.	$12x + 7 = 2x - 24$
18.	$3x + 2 = 6x - 2$
19.	$7x + 3 = 10x - 20$
20.	$3 - 11x = 7x - 10$
21.	$1 - 6x = x$
22.	$5 - 11x = 5x - 48$
23.	$1 - 5x = 3x$
24.	$x + 1 = 11x$
25.	$3x + 7 = 8x - 6$
26.	$3 - 11x = 12x - 8$
27.	$9x + 6 = x - 40$
28.	$3x + 5 = 7x - 36$
29.	$10x + 6 = 11x - 50$
30.	$8x + 10 = 10x - 99$



24.

1.	$9x + 12 = 2x - 99$
2.	$5x + 3 = 11x - 8$
3.	$12 - 9x = 2x - 66$
4.	$9x + 8 = 10x - 7$
5.	$6x + 2 = 4x - 12$
6.	$12 - 3x = 10x - 99$
7.	$5x + 4 = 9x - 6$
8.	$10 - 9x = 7x - 54$
9.	$1 - x = 5x$
10.	$9x + 7 = 12x - 30$
11.	$1 - 6x = 9x$
12.	$11 - 3x = 3x - 60$
13.	$3x + 11 = 9x - 20$
14.	$9x + 7 = 4x - 72$
15.	$8x + 6 = 5x - 55$
16.	$7 - 5x = 6x - 6$
17.	$11 - 12x = 11x - 60$
18.	$1 - 11x = 8x$
19.	$2 - 11x = 11x - 1$
20.	$6x + 8 = 11x - 21$
21.	$8 - 2x = 10x - 35$
22.	$10 - 11x = 7x - 63$
23.	$8x + 4 = 9x - 36$
24.	$12 - 5x = 9x - 99$
25.	$6x + 7 = 12x - 66$
26.	$9 - 2x = 2x - 48$
27.	$7x + 2 = 8x - 12$
28.	$10 - 6x = 7x - 108$
29.	$12 - 9x = 3x - 44$
30.	$3x + 3 = 12x - 18$

25.

1.	$8 - 6x = x - 28$
2.	$8x + 1 = 6x$
3.	$7x + 9 = 2x - 40$
4.	$9x + 9 = 4x - 40$
5.	$1 - 4x = 8x$
6.	$6x + 3 = 5x - 24$
7.	$4 - 7x = 4x - 6$
8.	$7x + 7 = 5x - 30$
9.	$10 - 2x = 9x - 63$
10.	$5 - 8x = 5x - 24$
11.	$3x + 3 = 4x - 12$
12.	$10 - 11x = 7x - 72$
13.	$9 - 12x = 5x - 8$
14.	$1 - 7x = 3x$
15.	$2 - 6x = 7x - 3$
16.	$4 - x = 5x - 36$
17.	$6x + 8 = 9x - 56$
18.	$4 - x = 5x - 33$
19.	$4 - 5x = 6x - 18$
20.	$9 - 11x = 9x - 32$
21.	$1 - 12x = 5x$
22.	$7x + 6 = 5x - 20$
23.	$5 - 2x = 3x - 20$
24.	$10x + 2 = 8x - 3$
25.	$10x + 12 = 12x - 11$
26.	$6 - 5x = 4x - 60$
27.	$8 - 3x = 9x - 7$
28.	$8x + 9 = 12x - 40$
29.	$9 - x = 10x - 24$
30.	$12 - 2x = x - 55$

26.

1.	$12 - 4x = 3x - 77$
2.	$10x + 7 = 11x - 66$
3.	$5 - 11x = 8x - 12$
4.	$8x + 8 = 11x - 77$
5.	$x + 8 = 11x - 14$
6.	$5x + 6 = x - 10$
7.	$6x + 9 = 12x - 80$
8.	$12x + 12 = 7x - 55$
9.	$x + 8 = 11x - 28$
10.	$2 - 5x = 6x - 8$
11.	$2 - 9x = 8x - 4$
12.	$9x + 7 = 5x - 66$
13.	$11x + 5 = 2x - 44$
14.	$2 - 12x = 11x - 2$
15.	$6 - 7x = 12x - 45$
16.	$9x + 2 = 10x - 3$
17.	$11x + 5 = 12x - 48$
18.	$2x + 11 = 11x - 120$
19.	$3x + 1 = 10x$
20.	$3 - 5x = 2x - 2$
21.	$3x + 9 = 12x - 72$
22.	$8x + 12 = 3x - 44$
23.	$8x + 11 = 9x - 20$
24.	$11 - 8x = 7x - 90$
25.	$5 - 3x = 8x - 8$
26.	$1 - x = 4x$
27.	$1 - 3x = 2x$
28.	$6 - 10x = 10x - 45$
29.	$9x + 11 = 6x - 20$
30.	$10 - 4x = 12x - 9$

27.

1.	$7 - x = 4x - 48$
2.	$7x + 10 = 3x - 36$
3.	$6 - 6x = 7x - 55$
4.	$5 - 4x = 7x - 8$
5.	$8 - 2x = 12x - 14$
6.	$11x + 1 = 12x$
7.	$6x + 11 = 2x - 70$
8.	$2x + 1 = 10x$
9.	$2x + 2 = 4x - 12$
10.	$12x + 3 = 13x - 12$
11.	$9 - 3x = 7x - 64$
12.	$6x + 12 = 7x - 66$
13.	$7 - 6x = 7x - 66$
14.	$5 - 6x = 11x - 20$
15.	$4 - 7x = 9x - 6$
16.	$4x + 8 = 3x - 56$
17.	$3x + 5 = 6x - 48$
18.	$1 - 2x = x$
19.	$3x + 4 = 2x - 18$
20.	$2 - 7x = 6x - 6$
21.	$3x + 11 = 5x - 40$
22.	$3x + 7 = 12x - 36$
23.	$11x + 10 = 12x - 99$
24.	$9x + 9 = 10x - 24$
25.	$3x + 6 = 4x - 55$
26.	$12 - 3x = 6x - 88$
27.	$4x + 3 = 6x - 4$
28.	$8x + 11 = 5x - 50$
29.	$11 - 2x = 7x - 30$
30.	$10x + 11 = 12x - 40$

28.

1.	$7x + 7 = x - 54$
2.	$7x + 1 = 5x$
3.	$4 - 2x = x - 3$
4.	$2 - 9x = 4x - 8$
5.	$3x + 7 = 2x - 24$
6.	$8x + 9 = 5x - 16$
7.	$11x + 3 = 12x - 16$
8.	$9 - 3x = 3x - 16$
9.	$1 - 9x = 7x$
10.	$2x + 1 = 3x$
11.	$12x + 2 = 10x - 7$
12.	$5 - 9x = 12x - 40$
13.	$3x + 2 = 9x - 5$
14.	$4x + 12 = 5x - 33$
15.	$x + 11 = 5x - 40$
16.	$12 - 12x = 2x - 66$
17.	$5x + 2 = 10x - 5$
18.	$9 - 11x = 7x - 32$
19.	$8 - 8x = 4x - 7$
20.	$12x + 2 = 8x - 11$
21.	$2 - 5x = 8x - 6$
22.	$12x + 11 = 5x - 10$
23.	$4x + 12 = 9x - 55$
24.	$8x + 8 = 2x - 28$
25.	$2x + 7 = 9x - 72$
26.	$10 - 10x = 12x - 36$
27.	$12x + 8 = 9x - 84$
28.	$8x + 7 = 4x - 12$
29.	$10 - 11x = 7x - 45$
30.	$9x + 5 = 7x - 36$

29.

1.	$5 - 2x = 3x - 28$
2.	$10 - 3x = 11x - 18$
3.	$4x + 6 = 9x - 20$
4.	$4 - 6x = 6x - 15$
5.	$x + 1 = 9x$
6.	$7x + 11 = 5x - 70$
7.	$3x + 1 = 2x$
8.	$7 - 12x = 7x - 66$
9.	$12x + 4 = 2x - 27$
10.	$2x + 10 = 3x - 45$
11.	$5 - 10x = 12x - 32$
12.	$7 - 6x = 7x - 30$
13.	$4 - 4x = 7x - 21$
14.	$6 - 5x = 11x - 5$
15.	$4x + 12 = 5x - 110$
16.	$2 - 9x = 2x - 4$
17.	$7x + 8 = 3x - 14$
18.	$8 - 10x = 8x - 14$
19.	$2x + 7 = 3x - 30$
20.	$12 - 9x = 4x - 132$
21.	$4 - 10x = 4x - 15$
22.	$4x + 8 = 11x - 21$
23.	$12 - 2x = 10x - 132$
24.	$8 - 12x = 12x - 7$
25.	$4x + 4 = 11x - 36$
26.	$3 - 8x = 4x - 10$
27.	$1 - 11x = 11x$
28.	$12 - 12x = 3x - 88$
29.	$10 - 12x = 4x - 9$
30.	$5 - 3x = 11x - 36$

30.

1.	$2 - 6x = 5x - 10$
2.	$6x + 4 = 8x - 30$
3.	$12 - 2x = 12x - 66$
4.	$12x + 2 = 13x - 12$
5.	$8x + 11 = x - 20$
6.	$3x + 5 = 6x - 4$
7.	$10 - 12x = 8x - 27$
8.	$9x + 1 = 5x$
9.	$10x + 12 = 9x - 33$
10.	$11 - 10x = 6x - 50$
11.	$3 - 8x = 6x - 12$
12.	$10 - 11x = 6x - 81$
13.	$5x + 5 = 8x - 44$
14.	$2 - 2x = 6x - 10$
15.	$11x + 4 = 12x - 33$
16.	$2 - 3x = 7x - 9$
17.	$x + 6 = 5x - 20$
18.	$3x + 12 = 2x - 22$
19.	$11x + 11 = 9x - 100$
20.	$2 - 9x = 5x - 3$
21.	$4x + 6 = 6x - 45$
22.	$7 - 12x = 9x - 60$
23.	$1 - 2x = 3x$
24.	$x + 9 = 2x - 8$
25.	$x + 3 = 11x - 14$
26.	$7 - 5x = 10x - 66$
27.	$6x + 10 = 5x - 36$
28.	$5x + 11 = 11x - 40$
29.	$8 - 6x = x - 70$
30.	$6 - 6x = 8x - 45$

Rešitve:

1.

1.	$4 - 4x = 12x - 3$	$x = 7/16$
2.	$11 - 3x = 2x - 90$	$x = 101/5$
3.	$2x + 7 = 4x - 18$	$x = 25/2$
4.	$9 - 6x = 5x - 64$	$x = 73/11$
5.	$7 - 8x = 2x - 66$	$x = 73/10$
6.	$8 - 4x = 7x - 7$	$x = 15/11$
7.	$8 - 8x = 4x - 70$	$x = 13/2$
8.	$1 - 11x = 7x$	$x = 1/18$
9.	$6 - 8x = 7x - 55$	$x = 61/15$
10.	$6 - 9x = 6x - 5$	$x = 11/15$
11.	$3x + 10 = 10x - 9$	$x = 19/7$
12.	$4x + 10 = 8x - 90$	$x = 25$
13.	$3 - 6x = 3x - 6$	$x = 1$
14.	$7x + 6 = 3x - 15$	$x = -21/4$
15.	$4 - 9x = 5x - 30$	$x = 17/7$
16.	$11x + 9 = 3x - 48$	$x = -57/8$
17.	$9 - 8x = 11x - 32$	$x = 41/19$
18.	$10 - 11x = 7x - 45$	$x = 55/18$
19.	$11 - 5x = 3x - 60$	$x = 71/8$
20.	$2 - 10x = 2x - 4$	$x = 1/2$
21.	$7 - 7x = 10x - 36$	$x = 43/17$
22.	$10 - 5x = 6x - 108$	$x = 118/11$
23.	$4x + 2 = 9x - 7$	$x = 9/5$
24.	$2 - x = 12x - 6$	$x = 8/13$
25.	$11x + 2 = 8x - 6$	$x = -8/3$
26.	$12x + 5 = 5x - 8$	$x = -13/7$
27.	$2 - 11x = 10x - 8$	$x = 10/21$
28.	$12x + 4 = 8x - 36$	$x = -10$
29.	$6x + 8 = 10x - 35$	$x = 43/4$
30.	$3 - 3x = 6x - 22$	$x = 25/9$



2.

1.	$8x + 4 = 11x - 33$	$x = 37 / 3$
2.	$4x + 8 = x - 70$	$x = -26$
3.	$10 - 7x = 2x - 63$	$x = 73 / 9$
4.	$2x + 3 = x - 8$	$x = -11$
5.	$3x + 9 = 11x - 72$	$x = 81 / 8$
6.	$6 - 2x = 2x - 5$	$x = 11 / 4$
7.	$10x + 3 = 11x - 10$	$x = 13$
8.	$8 - 12x = 2x - 35$	$x = 43 / 14$
9.	$x + 5 = 7x - 28$	$x = 11 / 2$
10.	$x + 4 = 12x - 15$	$x = 19 / 11$
11.	$4x + 7 = 10x - 6$	$x = 13 / 6$
12.	$8 - 11x = 10x - 35$	$x = 43 / 21$
13.	$2 - 6x = 4x - 5$	$x = 7 / 10$
14.	$8 - 3x = x - 77$	$x = 85 / 4$
15.	$10x + 2 = x - 5$	$x = -7 / 9$
16.	$4 - 5x = 2x - 12$	$x = 16 / 7$
17.	$12 - 10x = 2x - 121$	$x = 133 / 12$
18.	$6 - 11x = 2x - 5$	$x = 11 / 13$
19.	$8 - 8x = 7x - 7$	$x = 1$
20.	$6x + 11 = 7x - 30$	$x = 41$
21.	$4 - 4x = x - 12$	$x = 16 / 5$
22.	$9 - 8x = 3x - 72$	$x = 81 / 11$
23.	$9x + 5 = 12x - 4$	$x = 3$
24.	$7x + 9 = 4x - 88$	$x = -97 / 3$
25.	$2x + 2 = 9x - 3$	$x = 5 / 7$
26.	$5 - 6x = 6x - 16$	$x = 7 / 4$
27.	$4x + 3 = 2x - 20$	$x = -23 / 2$
28.	$10x + 7 = 11x - 36$	$x = 43$
29.	$2x + 2 = 7x - 6$	$x = 8 / 5$
30.	$6 - 6x = 8x - 15$	$x = 3 / 2$

3.

1.	$9 - 4x = 11x - 32$	$x = 41 / 15$
2.	$12x + 9 = x - 96$	$x = -105 / 11$
3.	$4 - 5x = 5x - 18$	$x = 11 / 5$
4.	$10x + 7 = 11x - 72$	$x = 79$
5.	$8 - 4x = 7x - 35$	$x = 43 / 11$
6.	$2x + 12 = 6x - 44$	$x = 14$
7.	$1 - 6x = 12x$	$x = 1 / 18$
8.	$1 - 6x = 10x$	$x = 1 / 16$
9.	$8x + 5 = 9x - 40$	$x = 45$
10.	$3x + 8 = 8x - 77$	$x = 17$
11.	$12x + 11 = x - 40$	$x = -51 / 11$
12.	$2x + 7 = 5x - 60$	$x = 67 / 3$
13.	$6 - 3x = 10x - 10$	$x = 16 / 13$
14.	$6 - 3x = 8x - 60$	$x = 6$
15.	$x + 4 = 3x - 15$	$x = 19 / 2$
16.	$5 - x = 7x - 28$	$x = 33 / 8$
17.	$9 - 12x = 2x - 56$	$x = 65 / 14$
18.	$7 - 3x = 12x - 18$	$x = 5 / 3$
19.	$3x + 2 = 9x - 10$	$x = 2$
20.	$4 - 4x = 11x - 27$	$x = 31 / 15$
21.	$12x + 1 = 10x$	$x = -1 / 2$
22.	$6x + 8 = 8x - 49$	$x = 57 / 2$
23.	$2 - 9x = 7x - 10$	$x = 3 / 4$
24.	$10x + 5 = 11x - 4$	$x = 9$
25.	$6x + 6 = 8x - 5$	$x = 11 / 2$
26.	$6x + 9 = 10x - 64$	$x = 73 / 4$
27.	$8 - 6x = 3x - 14$	$x = 22 / 9$
28.	$10x + 2 = x - 5$	$x = -7 / 9$
29.	$12x + 11 = 2x - 10$	$x = -21 / 10$
30.	$6x + 9 = 10x - 88$	$x = 97 / 4$

4.

1.	$9 - 5x = 5x - 56$	$x = 13 / 2$
2.	$4 - 3x = 3x - 3$	$x = 7 / 6$
3.	$11 - 2x = 2x - 50$	$x = 61 / 4$
4.	$9x + 5 = 4x - 20$	$x = -5$
5.	$9x + 3 = x - 14$	$x = -17 / 8$
6.	$11x + 6 = 8x - 30$	$x = -12$
7.	$4 - 11x = x - 6$	$x = 5 / 6$
8.	$8x + 5 = 4x - 40$	$x = -45 / 4$
9.	$x + 2 = 8x - 9$	$x = 11 / 7$
10.	$12 - 7x = 3x - 99$	$x = 111 / 10$
11.	$1 - x = 3x$	$x = 1 / 4$
12.	$1 - x = x$	$x = 1 / 2$
13.	$2 - 11x = 6x - 6$	$x = 8 / 17$
14.	$6 - 7x = x - 15$	$x = 21 / 8$
15.	$9x + 4 = x - 3$	$x = -7 / 8$
16.	$5x + 6 = 6x - 50$	$x = 56$
17.	$4x + 7 = x - 30$	$x = -37 / 3$
18.	$9x + 8 = x - 21$	$x = -29 / 8$
19.	$9 - 3x = 4x - 88$	$x = 97 / 7$
20.	$12x + 6 = 10x - 60$	$x = -33$
21.	$11x + 8 = 12x - 70$	$x = 78$
22.	$9x + 4 = 3x - 36$	$x = -20 / 3$
23.	$x + 4 = 6x - 30$	$x = 34 / 5$
24.	$10 - 12x = 2x - 90$	$x = 50 / 7$
25.	$7 - x = 2x - 18$	$x = 25 / 3$
26.	$9 - 3x = 5x - 8$	$x = 17 / 8$
27.	$10 - 5x = 12x - 72$	$x = 82 / 17$
28.	$3x + 9 = 8x - 56$	$x = 13$
29.	$9x + 1 = x$	$x = -1 / 8$
30.	$2x + 9 = 4x - 24$	$x = 33 / 2$

5.

1.	$8x + 4 = x - 12$	$x = -16 / 7$
2.	$9x + 6 = 5x - 55$	$x = -61 / 4$
3.	$6x + 4 = x - 9$	$x = -13 / 5$
4.	$3 - 2x = 12x - 20$	$x = 23 / 14$
5.	$9 - 3x = x - 24$	$x = 33 / 4$
6.	$x + 9 = 5x - 64$	$x = 73 / 4$
7.	$3x + 7 = x - 18$	$x = -25 / 2$
8.	$4x + 6 = 5x - 20$	$x = 26$
9.	$10x + 7 = 7x - 30$	$x = -37 / 3$
10.	$3x + 4 = 4x - 33$	$x = 37$
11.	$2 - 9x = 12x - 10$	$x = 4 / 7$
12.	$2 - 8x = 5x - 12$	$x = 14 / 13$
13.	$1 - 12x = 2x$	$x = 1 / 14$
14.	$3 - 8x = 6x - 6$	$x = 9 / 14$
15.	$5x + 2 = 9x - 1$	$x = 3 / 4$
16.	$6 - 6x = 2x - 5$	$x = 11 / 8$
17.	$10 - 3x = 8x - 18$	$x = 28 / 11$
18.	$10 - 7x = 7x - 54$	$x = 32 / 7$
19.	$4x + 9 = 3x - 8$	$x = -17$
20.	$4x + 12 = 9x - 33$	$x = 9$
21.	$5x + 5 = 3x - 20$	$x = -25 / 2$
22.	$5 - 11x = 2x - 8$	$x = 1$
23.	$12x + 4 = 11x - 27$	$x = -31$
24.	$10 - 6x = 5x - 108$	$x = 118 / 11$
25.	$8x + 9 = 3x - 16$	$x = -5$
26.	$8x + 4 = 12x - 3$	$x = 7 / 4$
27.	$6 - 4x = 12x - 10$	$x = 1$
28.	$1 - 3x = 7x$	$x = 1 / 10$
29.	$4 - 10x = 11x - 36$	$x = 40 / 21$
30.	$12 - 9x = 12x - 132$	$x = 48 / 7$

6.

1.	$12x + 1 = 10x$	$x = -1/2$
2.	$7x + 11 = 5x - 80$	$x = -91/2$
3.	$2 - 3x = 5x - 7$	$x = 9/8$
4.	$5 - 4x = x - 32$	$x = 37/5$
5.	$5x + 11 = 10x - 70$	$x = 81/5$
6.	$x + 1 = 2x$	$x = 1$
7.	$2x + 9 = 8x - 80$	$x = 89/6$
8.	$9 - 3x = 2x - 64$	$x = 73/5$
9.	$7 - 5x = 4x - 6$	$x = 13/9$
10.	$7x + 4 = 3x - 12$	$x = -4$
11.	$5x + 2 = 7x - 10$	$x = 6$
12.	$6x + 6 = 9x - 40$	$x = 46/3$
13.	$2 - 2x = 2x - 4$	$x = 3/2$
14.	$5x + 10 = 6x - 54$	$x = 64$
15.	$2 - 3x = 8x - 7$	$x = 9/11$
16.	$8x + 11 = 7x - 40$	$x = -51$
17.	$4 - 7x = 6x - 24$	$x = 28/13$
18.	$10 - 11x = 10x - 54$	$x = 64/21$
19.	$x + 3 = 3x - 22$	$x = 25/2$
20.	$2 - 5x = 6x - 9$	$x = 1$
21.	$11 - x = 3x - 80$	$x = 91/4$
22.	$4x + 4 = 11x - 33$	$x = 37/7$
23.	$2x + 3 = 11x - 2$	$x = 5/9$
24.	$x + 5 = 2x - 24$	$x = 29$
25.	$6x + 1 = x$	$x = -1/5$
26.	$x + 9 = 10x - 40$	$x = 49/9$
27.	$6x + 8 = 9x - 28$	$x = 12$
28.	$11x + 7 = 5x - 6$	$x = -13/6$
29.	$8 - x = 6x - 49$	$x = 57/7$
30.	$6 - 12x = 8x - 35$	$x = 41/20$

7.

1.	$4 - 12x = 10x - 24$	$x = 14 / 11$
2.	$4 - 6x = 4x - 30$	$x = 17 / 5$
3.	$11 - 8x = 3x - 20$	$x = 31 / 11$
4.	$8x + 8 = 7x - 7$	$x = -15$
5.	$5 - 10x = 7x - 40$	$x = 45 / 17$
6.	$3x + 2 = 12x - 7$	$x = 1$
7.	$2 - 7x = 12x - 10$	$x = 12 / 19$
8.	$7x + 8 = 9x - 70$	$x = 39$
9.	$6 - 10x = 9x - 40$	$x = 46 / 19$
10.	$10 - 8x = 11x - 45$	$x = 55 / 19$
11.	$11 - x = 12x - 10$	$x = 21 / 13$
12.	$7 - 2x = 4x - 30$	$x = 37 / 6$
13.	$10x + 8 = x - 49$	$x = -19 / 3$
14.	$11x + 9 = 4x - 64$	$x = -73 / 7$
15.	$12 - 11x = 3x - 99$	$x = 111 / 14$
16.	$12 - 3x = 12x - 11$	$x = 23 / 15$
17.	$4x + 7 = 9x - 30$	$x = 37 / 5$
18.	$7 - 10x = 12x - 66$	$x = 73 / 22$
19.	$6x + 8 = 7x - 7$	$x = 15$
20.	$5x + 10 = 8x - 18$	$x = 28 / 3$
21.	$5 - 6x = 2x - 28$	$x = 33 / 8$
22.	$1 - 6x = 12x$	$x = 1 / 18$
23.	$12x + 11 = 4x - 110$	$x = -121 / 8$
24.	$11 - 10x = 6x - 40$	$x = 51 / 16$
25.	$2 - 9x = 9x - 10$	$x = 2 / 3$
26.	$x + 7 = 9x - 66$	$x = 73 / 8$
27.	$5 - 10x = x - 32$	$x = 37 / 11$
28.	$6x + 6 = 5x - 20$	$x = -26$
29.	$10x + 5 = 6x - 28$	$x = -33 / 4$
30.	$2 - 10x = 3x - 6$	$x = 8 / 13$

8.

1.	$12x + 9 = 8x - 56$	$x = -65 / 4$
2.	$11 - 6x = 2x - 30$	$x = 41 / 8$
3.	$10x + 4 = 9x - 30$	$x = -34$
4.	$7x + 1 = 10x$	$x = 1 / 3$
5.	$12x + 11 = 11x - 110$	$x = -121$
6.	$x + 2 = 8x - 9$	$x = 11 / 7$
7.	$5x + 7 = 3x - 30$	$x = -37 / 2$
8.	$11x + 6 = 12x - 15$	$x = 21$
9.	$6 - 7x = 7x - 35$	$x = 41 / 14$
10.	$4 - 4x = 10x - 30$	$x = 17 / 7$
11.	$8 - 8x = 6x - 28$	$x = 18 / 7$
12.	$9 - 5x = 5x - 48$	$x = 57 / 10$
13.	$10 - 7x = 11x - 9$	$x = 19 / 18$
14.	$5x + 10 = x - 72$	$x = -41 / 2$
15.	$5 - 9x = 9x - 4$	$x = 1 / 2$
16.	$6 - 2x = 6x - 50$	$x = 7$
17.	$2x + 10 = 10x - 36$	$x = 23 / 4$
18.	$9x + 1 = 7x$	$x = -1 / 2$
19.	$5x + 10 = 7x - 18$	$x = 14$
20.	$2 - x = 9x - 10$	$x = 6 / 5$
21.	$4x + 12 = 5x - 88$	$x = 100$
22.	$8x + 7 = 5x - 18$	$x = -25 / 3$
23.	$3 - 6x = x - 4$	$x = 1$
24.	$3 - 5x = 9x - 12$	$x = 15 / 14$
25.	$1 - 9x = 9x$	$x = 1 / 18$
26.	$6x + 6 = 10x - 60$	$x = 33 / 2$
27.	$7 - 12x = 11x - 42$	$x = 49 / 23$
28.	$6 - 5x = 7x - 60$	$x = 11 / 2$
29.	$2x + 3 = 7x - 16$	$x = 19 / 5$
30.	$3 - 8x = x - 10$	$x = 13 / 9$

9.

1.	$5x + 6 = 9x - 60$	$x = 33 / 2$
2.	$10 - 10x = 9x - 27$	$x = 37 / 19$
3.	$10 - 8x = 4x - 54$	$x = 16 / 3$
4.	$9 - 2x = 2x - 56$	$x = 65 / 4$
5.	$1 - 10x = 9x$	$x = 1 / 19$
6.	$11x + 2 = 5x - 8$	$x = -5 / 3$
7.	$5 - 5x = 11x - 36$	$x = 41 / 16$
8.	$3 - 9x = 8x - 2$	$x = 5 / 17$
9.	$10 - 3x = 12x - 90$	$x = 20 / 3$
10.	$8 - 12x = 12x - 7$	$x = 5 / 8$
11.	$7 - 3x = x - 24$	$x = 31 / 4$
12.	$x + 7 = 6x - 6$	$x = 13 / 5$
13.	$11 - 9x = 12x - 10$	$x = 1$
14.	$12x + 5 = 2x - 44$	$x = -49 / 10$
15.	$8x + 10 = 9x - 63$	$x = 73$
16.	$3x + 11 = 10x - 40$	$x = 51 / 7$
17.	$8x + 6 = 6x - 25$	$x = -31 / 2$
18.	$8x + 2 = 2x - 11$	$x = -13 / 6$
19.	$11 - 11x = 11x - 80$	$x = 91 / 22$
20.	$8x + 5 = 9x - 44$	$x = 49$
21.	$12x + 1 = 9x$	$x = -1 / 3$
22.	$4x + 12 = 5x - 55$	$x = 67$
23.	$3 - 4x = 11x - 4$	$x = 7 / 15$
24.	$4 - 11x = 12x - 33$	$x = 37 / 23$
25.	$3 - 9x = 11x - 4$	$x = 7 / 20$
26.	$2x + 12 = 7x - 88$	$x = 20$
27.	$8 - 2x = 7x - 14$	$x = 22 / 9$
28.	$2x + 6 = 9x - 15$	$x = 3$
29.	$7 - 11x = 2x - 18$	$x = 25 / 13$
30.	$2x + 10 = 9x - 18$	$x = 4$



## 10.

1.	$5 - 10x = 4x - 44$	$x = 7 / 2$
2.	$x + 8 = 6x - 21$	$x = 29 / 5$
3.	$10 - 12x = 2x - 81$	$x = 13 / 2$
4.	$2 - 6x = x - 11$	$x = 13 / 7$
5.	$6x + 11 = 7x - 40$	$x = 51$
6.	$5x + 11 = 6x - 80$	$x = 91$
7.	$5 - 11x = x - 24$	$x = 29 / 12$
8.	$10 - 6x = 10x - 108$	$x = 59 / 8$
9.	$9x + 8 = 10x - 14$	$x = 22$
10.	$5x + 5 = x - 48$	$x = -53 / 4$
11.	$7 - x = x - 42$	$x = 49 / 2$
12.	$6 - 2x = 11x - 45$	$x = 51 / 13$
13.	$9x + 9 = 10x - 8$	$x = 17$
14.	$12 - 11x = 11x - 77$	$x = 89 / 22$
15.	$10 - 7x = 11x - 27$	$x = 37 / 18$
16.	$3x + 12 = x - 121$	$x = -133 / 2$
17.	$11x + 12 = 12x - 88$	$x = 100$
18.	$11 - 12x = 12x - 80$	$x = 91 / 24$
19.	$7 - 6x = 10x - 42$	$x = 49 / 16$
20.	$8 - x = 4x - 70$	$x = 78 / 5$
21.	$2 - 12x = 10x - 12$	$x = 7 / 11$
22.	$8 - 10x = 11x - 49$	$x = 19 / 7$
23.	$11 - 9x = 3x - 70$	$x = 27 / 4$
24.	$7x + 12 = 5x - 44$	$x = -28$
25.	$4 - 8x = 3x - 12$	$x = 16 / 11$
26.	$9 - 10x = 2x - 56$	$x = 65 / 12$
27.	$4x + 9 = x - 32$	$x = -41 / 3$
28.	$4 - 10x = x - 24$	$x = 28 / 11$
29.	$9x + 5 = 11x - 8$	$x = 13 / 2$
30.	$7x + 6 = 5x - 45$	$x = -51 / 2$

## 11.

1.	$9 - 7x = 5x - 48$	$x = 19 / 4$
2.	$4 - 3x = 8x - 3$	$x = 7 / 11$
3.	$3 - 3x = 7x - 20$	$x = 23 / 10$
4.	$12 - 12x = 10x - 22$	$x = 17 / 11$
5.	$12 - x = 5x - 22$	$x = 17 / 3$
6.	$10x + 5 = 3x - 44$	$x = -7$
7.	$11 - 4x = 10x - 110$	$x = 121 / 14$
8.	$4x + 10 = x - 108$	$x = -118 / 3$
9.	$x + 5 = 12x - 16$	$x = 21 / 11$
10.	$10 - 3x = 12x - 27$	$x = 37 / 15$
11.	$6x + 2 = 5x - 3$	$x = -5$
12.	$2x + 7 = 3x - 60$	$x = 67$
13.	$7 - 3x = 11x - 30$	$x = 37 / 14$
14.	$9 - 9x = x - 96$	$x = 21 / 2$
15.	$10 - 12x = 9x - 9$	$x = 19 / 21$
16.	$8 - 7x = 6x - 28$	$x = 36 / 13$
17.	$2x + 11 = 11x - 60$	$x = 71 / 9$
18.	$5 - 7x = x - 20$	$x = 25 / 8$
19.	$2 - x = 8x - 7$	$x = 1$
20.	$5 - 6x = 7x - 40$	$x = 45 / 13$
21.	$9x + 5 = 4x - 24$	$x = -29 / 5$
22.	$9x + 4 = 12x - 6$	$x = 10 / 3$
23.	$11x + 6 = 10x - 60$	$x = -66$
24.	$3x + 7 = 10x - 66$	$x = 73 / 7$
25.	$4 - 10x = 2x - 33$	$x = 37 / 12$
26.	$2 - x = 2x - 10$	$x = 4$
27.	$2x + 7 = 10x - 12$	$x = 19 / 8$
28.	$12x + 9 = 6x - 24$	$x = -11 / 2$
29.	$8 - x = 11x - 28$	$x = 3$
30.	$10x + 9 = 7x - 88$	$x = -97 / 3$

## 12.

1.	$2x + 9 = 12x - 48$	$x = 57 / 10$
2.	$10 - 5x = 11x - 27$	$x = 37 / 16$
3.	$8 - 10x = 9x - 49$	$x = 3$
4.	$3 - 4x = 8x - 20$	$x = 23 / 12$
5.	$1 - 10x = 11x$	$x = 1 / 21$
6.	$10 - 7x = 7x - 108$	$x = 59 / 7$
7.	$8x + 10 = 2x - 9$	$x = -19 / 6$
8.	$12 - 10x = 10x - 66$	$x = 39 / 10$
9.	$5x + 12 = 7x - 33$	$x = 45 / 2$
10.	$4 - 6x = 11x - 24$	$x = 28 / 17$
11.	$12 - 3x = x - 66$	$x = 39 / 2$
12.	$10x + 1 = 6x$	$x = -1 / 4$
13.	$10 - 11x = 3x - 72$	$x = 41 / 7$
14.	$2 - 3x = 9x - 1$	$x = 1 / 4$
15.	$4x + 6 = 3x - 5$	$x = -11$
16.	$7x + 7 = 12x - 72$	$x = 79 / 5$
17.	$9x + 9 = 2x - 80$	$x = -89 / 7$
18.	$6 - 3x = x - 5$	$x = 11 / 4$
19.	$9x + 10 = 7x - 72$	$x = -41$
20.	$7x + 2 = 3x - 4$	$x = -3 / 2$
21.	$4 - x = 2x - 12$	$x = 16 / 3$
22.	$6x + 10 = 11x - 9$	$x = 19 / 5$
23.	$4x + 5 = 8x - 20$	$x = 25 / 4$
24.	$11x + 7 = 12x - 48$	$x = 55$
25.	$6 - 6x = 6x - 35$	$x = 41 / 12$
26.	$10 - 2x = 6x - 54$	$x = 8$
27.	$8x + 6 = 5x - 10$	$x = -16 / 3$
28.	$11x + 2 = x - 4$	$x = -3 / 5$
29.	$6 - 3x = 11x - 55$	$x = 61 / 14$
30.	$11 - 11x = x - 60$	$x = 71 / 12$

## 13.

1.	$5 - 6x = 12x - 8$	$x = 13 / 18$
2.	$3x + 1 = x$	$x = -1 / 2$
3.	$8 - 2x = 4x - 42$	$x = 25 / 3$
4.	$8 - 12x = 5x - 35$	$x = 43 / 17$
5.	$5x + 8 = 12x - 21$	$x = 29 / 7$
6.	$10x + 1 = 3x$	$x = -1 / 7$
7.	$7x + 11 = 3x - 90$	$x = -101 / 4$
8.	$4x + 4 = 11x - 33$	$x = 37 / 7$
9.	$5 - 3x = 3x - 8$	$x = 13 / 6$
10.	$x + 4 = 4x - 24$	$x = 28 / 3$
11.	$1 - 4x = 11x$	$x = 1 / 15$
12.	$7 - 10x = 10x - 54$	$x = 61 / 20$
13.	$9x + 8 = 7x - 35$	$x = -43 / 2$
14.	$6x + 10 = 9x - 72$	$x = 82 / 3$
15.	$11x + 11 = 8x - 40$	$x = -17$
16.	$9x + 2 = 10x - 10$	$x = 12$
17.	$8x + 7 = 2x - 18$	$x = -25 / 6$
18.	$11x + 10 = 10x - 54$	$x = -64$
19.	$11x + 6 = 4x - 45$	$x = -51 / 7$
20.	$6 - 4x = 7x - 15$	$x = 21 / 11$
21.	$x + 11 = 3x - 90$	$x = 101 / 2$
22.	$6 - 2x = 11x - 5$	$x = 11 / 13$
23.	$10 - 4x = x - 54$	$x = 64 / 5$
24.	$3x + 5 = 8x - 12$	$x = 17 / 5$
25.	$6 - 3x = 11x - 10$	$x = 8 / 7$
26.	$9 - 8x = 11x - 24$	$x = 33 / 19$
27.	$1 - 3x = 10x$	$x = 1 / 13$
28.	$10x + 6 = 11x - 60$	$x = 66$
29.	$2 - 7x = 7x - 4$	$x = 3 / 7$
30.	$6 - 9x = 3x - 45$	$x = 17 / 4$

## 14.

1.	$9 - 4x = 4x - 24$	$x = 33 / 8$
2.	$7x + 5 = 5x - 24$	$x = -29 / 2$
3.	$11x + 10 = 2x - 108$	$x = -118 / 9$
4.	$12x + 7 = 7x - 6$	$x = -13 / 5$
5.	$10x + 11 = x - 40$	$x = -17 / 3$
6.	$9x + 2 = 8x - 5$	$x = -7$
7.	$3x + 5 = 4x - 8$	$x = 13$
8.	$10x + 12 = 12x - 55$	$x = 67 / 2$
9.	$8 - 2x = 4x - 56$	$x = 32 / 3$
10.	$1 - 10x = 5x$	$x = 1 / 15$
11.	$2 - 12x = 3x - 4$	$x = 2 / 5$
12.	$12x + 1 = 3x$	$x = -1 / 9$
13.	$7 - 12x = 10x - 36$	$x = 43 / 22$
14.	$10 - 11x = 10x - 45$	$x = 55 / 21$
15.	$10x + 1 = 11x$	$x = 1$
16.	$6 - 7x = 10x - 45$	$x = 3$
17.	$11x + 4 = 6x - 3$	$x = -7 / 5$
18.	$12x + 3 = 11x - 20$	$x = -23$
19.	$8x + 2 = x - 6$	$x = -8 / 7$
20.	$3x + 7 = 12x - 24$	$x = 31 / 9$
21.	$10 - 5x = 6x - 45$	$x = 5$
22.	$x + 7 = 12x - 30$	$x = 37 / 11$
23.	$9x + 12 = 6x - 99$	$x = -37$
24.	$12 - 8x = 3x - 55$	$x = 67 / 11$
25.	$6x + 4 = 11x - 3$	$x = 7 / 5$
26.	$3x + 10 = 12x - 36$	$x = 46 / 9$
27.	$3 - 6x = 7x - 24$	$x = 27 / 13$
28.	$12x + 12 = 8x - 132$	$x = -36$
29.	$11x + 5 = 12x - 36$	$x = 41$
30.	$1 - 7x = 5x$	$x = 1 / 12$

## 15.

1.	$6 - 11x = 4x - 60$	$x = 22 / 5$
2.	$4 - 6x = 11x - 9$	$x = 13 / 17$
3.	$9 - 7x = 8x - 8$	$x = 17 / 15$
4.	$11 - 11x = 5x - 120$	$x = 131 / 16$
5.	$7 - 12x = 4x - 72$	$x = 79 / 16$
6.	$10x + 9 = 12x - 80$	$x = 89 / 2$
7.	$9 - 8x = 12x - 72$	$x = 81 / 20$
8.	$5x + 9 = 3x - 56$	$x = -65 / 2$
9.	$5x + 7 = x - 60$	$x = -67 / 4$
10.	$3x + 9 = 8x - 48$	$x = 57 / 5$
11.	$2 - 6x = 5x - 6$	$x = 8 / 11$
12.	$12x + 4 = 7x - 12$	$x = -16 / 5$
13.	$5 - 10x = 10x - 44$	$x = 49 / 20$
14.	$10 - 8x = 2x - 36$	$x = 23 / 5$
15.	$12x + 1 = 9x$	$x = -1 / 3$
16.	$1 - x = 10x$	$x = 1 / 11$
17.	$9x + 10 = 8x - 72$	$x = -82$
18.	$11 - 5x = 8x - 70$	$x = 81 / 13$
19.	$7 - 6x = 5x - 48$	$x = 5$
20.	$12 - 12x = 8x - 77$	$x = 89 / 20$
21.	$x + 12 = 7x - 88$	$x = 50 / 3$
22.	$10 - 8x = 9x - 99$	$x = 109 / 17$
23.	$2x + 10 = 8x - 81$	$x = 91 / 6$
24.	$2x + 1 = 3x$	$x = 1$
25.	$8x + 7 = 2x - 12$	$x = -19 / 6$
26.	$7x + 2 = 8x - 7$	$x = 9$
27.	$1 - 5x = 11x$	$x = 1 / 16$
28.	$1 - x = 2x$	$x = 1 / 3$
29.	$2 - 3x = 2x - 7$	$x = 9 / 5$
30.	$8 - 2x = 7x - 70$	$x = 26 / 3$

16.

1.	$12 - 8x = 8x - 132$	$x = 9$
2.	$6 - 3x = 5x - 30$	$x = 9/2$
3.	$4 - 12x = 3x - 18$	$x = 22/15$
4.	$9x + 2 = 6x - 1$	$x = -1$
5.	$3 - 5x = 2x - 8$	$x = 11/7$
6.	$8x + 10 = x - 45$	$x = -55/7$
7.	$3 - x = 8x - 16$	$x = 19/9$
8.	$11x + 12 = 10x - 55$	$x = -67$
9.	$9 - 9x = 6x - 16$	$x = 5/3$
10.	$6 - 7x = 2x - 50$	$x = 56/9$
11.	$10 - 9x = x - 63$	$x = 73/10$
12.	$2x + 8 = 11x - 21$	$x = 29/9$
13.	$9x + 7 = 3x - 48$	$x = -55/6$
14.	$7x + 10 = 3x - 90$	$x = -25$
15.	$9 - 11x = 7x - 88$	$x = 97/18$
16.	$6 - 8x = x - 15$	$x = 7/3$
17.	$10x + 4 = 4x - 18$	$x = -11/3$
18.	$10 - 3x = 11x - 63$	$x = 73/14$
19.	$11x + 5 = 12x - 36$	$x = 41$
20.	$1 - 6x = 6x$	$x = 1/12$
21.	$x + 8 = 4x - 77$	$x = 85/3$
22.	$7 - 8x = 12x - 72$	$x = 79/20$
23.	$2 - 9x = 4x - 11$	$x = 1$
24.	$4x + 4 = 7x - 33$	$x = 37/3$
25.	$4x + 1 = 7x$	$x = 1/3$
26.	$5 - x = 7x - 40$	$x = 45/8$
27.	$1 - 3x = x$	$x = 1/4$
28.	$x + 4 = 12x - 3$	$x = 7/11$
29.	$6x + 6 = 3x - 15$	$x = -7$
30.	$6x + 2 = 3x - 9$	$x = -11/3$

## 17.

1.	$5 - 9x = 4x - 24$	$x = 29 / 13$
2.	$2 - 2x = 7x - 1$	$x = 1 / 3$
3.	$3x + 6 = 7x - 30$	$x = 9$
4.	$4 - 7x = x - 21$	$x = 25 / 8$
5.	$10 - x = 7x - 63$	$x = 73 / 8$
6.	$8x + 6 = 3x - 40$	$x = -46 / 5$
7.	$1 - 6x = 11x$	$x = 1 / 17$
8.	$11 - 9x = 11x - 120$	$x = 131 / 20$
9.	$2x + 12 = 10x - 121$	$x = 133 / 8$
10.	$8 - 2x = 12x - 14$	$x = 11 / 7$
11.	$8 - 4x = 10x - 84$	$x = 46 / 7$
12.	$8x + 11 = 3x - 70$	$x = -81 / 5$
13.	$11 - 11x = 3x - 60$	$x = 71 / 14$
14.	$3 - 12x = 5x - 18$	$x = 21 / 17$
15.	$10 - 8x = 4x - 45$	$x = 55 / 12$
16.	$4x + 10 = 9x - 99$	$x = 109 / 5$
17.	$5x + 3 = 2x - 14$	$x = -17 / 3$
18.	$10 - 2x = 10x - 9$	$x = 19 / 12$
19.	$11 - 5x = 7x - 120$	$x = 131 / 12$
20.	$12x + 9 = 2x - 16$	$x = -5 / 2$
21.	$2x + 11 = x - 70$	$x = -81$
22.	$5 - 7x = 10x - 28$	$x = 33 / 17$
23.	$8 - x = 11x - 42$	$x = 25 / 6$
24.	$5x + 4 = 6x - 9$	$x = 13$
25.	$12 - 8x = 3x - 77$	$x = 89 / 11$
26.	$6x + 10 = 5x - 9$	$x = -19$
27.	$11x + 10 = 9x - 99$	$x = -109 / 2$
28.	$8 - 6x = 10x - 56$	$x = 4$
29.	$4x + 10 = 5x - 99$	$x = 109$
30.	$6 - 9x = 8x - 20$	$x = 26 / 17$



## 18.

1.	$x + 3 = 2x - 12$	$x = 15$
2.	$4x + 1 = 8x$	$x = 1/4$
3.	$8 - 6x = 9x - 21$	$x = 29/15$
4.	$x + 12 = 9x - 44$	$x = 7$
5.	$10 - 2x = 7x - 90$	$x = 100/9$
6.	$1 - 10x = 12x$	$x = 1/22$
7.	$6x + 6 = 2x - 10$	$x = -4$
8.	$8x + 7 = 4x - 42$	$x = -49/4$
9.	$5x + 5 = 9x - 20$	$x = 25/4$
10.	$9 - 8x = 4x - 80$	$x = 89/12$
11.	$3x + 9 = 7x - 24$	$x = 33/4$
12.	$8x + 1 = x$	$x = -1/7$
13.	$5 - 11x = 5x - 32$	$x = 37/16$
14.	$10 - 7x = 7x - 18$	$x = 2$
15.	$12 - 6x = 2x - 132$	$x = 18$
16.	$9 - 11x = 12x - 56$	$x = 65/23$
17.	$2x + 7 = 5x - 36$	$x = 43/3$
18.	$10 - 2x = x - 36$	$x = 46/3$
19.	$6x + 4 = 9x - 3$	$x = 7/3$
20.	$9 - 9x = 2x - 96$	$x = 105/11$
21.	$7x + 4 = 9x - 6$	$x = 5$
22.	$2x + 7 = 4x - 42$	$x = 49/2$
23.	$5x + 4 = 2x - 36$	$x = -40/3$
24.	$10 - 9x = 5x - 99$	$x = 109/14$
25.	$7 - 6x = 6x - 12$	$x = 19/12$
26.	$4x + 1 = 8x$	$x = 1/4$
27.	$4x + 6 = 5x - 10$	$x = 16$
28.	$12 - x = 7x - 88$	$x = 25/2$
29.	$2x + 2 = 6x - 2$	$x = 1$
30.	$9 - 7x = x - 96$	$x = 105/8$

## 19.

1.	$4x + 1 = x$	$x = -1/3$
2.	$8x + 3 = 7x - 10$	$x = -13$
3.	$3x + 9 = 12x - 24$	$x = 11/3$
4.	$1 - 3x = 3x$	$x = 1/6$
5.	$7 - 5x = 10x - 36$	$x = 43/15$
6.	$2 - 10x = x - 2$	$x = 4/11$
7.	$x + 1 = 8x$	$x = 1/7$
8.	$8 - 12x = 11x - 84$	$x = 4$
9.	$7 - 11x = 8x - 24$	$x = 31/19$
10.	$5 - 11x = 2x - 48$	$x = 53/13$
11.	$11x + 9 = 3x - 32$	$x = -41/8$
12.	$9x + 7 = 6x - 48$	$x = -55/3$
13.	$x + 3 = 9x - 14$	$x = 17/8$
14.	$5 - 4x = 7x - 32$	$x = 37/11$
15.	$4 - 11x = 10x - 9$	$x = 13/21$
16.	$3 - 8x = 9x - 6$	$x = 9/17$
17.	$4x + 10 = 11x - 9$	$x = 19/7$
18.	$8x + 10 = 9x - 63$	$x = 73$
19.	$5 - 2x = 5x - 20$	$x = 25/7$
20.	$7 - 12x = 8x - 42$	$x = 49/20$
21.	$11x + 2 = 12x - 4$	$x = 6$
22.	$1 - 9x = 3x$	$x = 1/12$
23.	$11x + 3 = 2x - 2$	$x = -5/9$
24.	$6 - 10x = x - 50$	$x = 56/11$
25.	$4 - 12x = 9x - 27$	$x = 31/21$
26.	$2 - 4x = 9x - 9$	$x = 11/13$
27.	$7 - 11x = 11x - 30$	$x = 37/22$
28.	$5 - 7x = 6x - 4$	$x = 9/13$
29.	$3 - 6x = 10x - 6$	$x = 9/16$
30.	$1 - 11x = 11x$	$x = 1/22$

20.

1.	$9 - 5x = 10x - 24$	$x = 11 / 5$
2.	$8x + 4 = 12x - 33$	$x = 37 / 4$
3.	$9 - x = 8x - 16$	$x = 25 / 9$
4.	$12 - 9x = 9x - 33$	$x = 5 / 2$
5.	$4 - 7x = 6x - 9$	$x = 1$
6.	$5x + 8 = 4x - 56$	$x = -64$
7.	$9 - 12x = 7x - 72$	$x = 81 / 19$
8.	$7 - 2x = 8x - 30$	$x = 37 / 10$
9.	$4 - 4x = 4x - 18$	$x = 11 / 4$
10.	$8x + 5 = 12x - 16$	$x = 21 / 4$
11.	$12 - 12x = 9x - 22$	$x = 34 / 21$
12.	$10x + 1 = 2x$	$x = -1 / 8$
13.	$7x + 7 = 9x - 30$	$x = 37 / 2$
14.	$6x + 7 = 5x - 72$	$x = -79$
15.	$2 - 9x = 5x - 9$	$x = 11 / 14$
16.	$1 - 12x = 3x$	$x = 1 / 15$
17.	$11 - 2x = 7x - 30$	$x = 41 / 9$
18.	$3 - 9x = 12x - 10$	$x = 13 / 21$
19.	$6x + 3 = x - 6$	$x = -9 / 5$
20.	$2x + 7 = 12x - 36$	$x = 43 / 10$
21.	$5 - 8x = 12x - 44$	$x = 49 / 20$
22.	$9 - 7x = 11x - 56$	$x = 65 / 18$
23.	$4 - 10x = 6x - 12$	$x = 1$
24.	$11x + 5 = 3x - 4$	$x = -9 / 8$
25.	$10x + 10 = 4x - 81$	$x = -91 / 6$
26.	$6x + 2 = 7x - 6$	$x = 8$
27.	$9x + 3 = 5x - 2$	$x = -5 / 4$
28.	$7x + 8 = 6x - 70$	$x = -78$
29.	$10x + 5 = 5x - 32$	$x = -37 / 5$
30.	$3x + 10 = x - 99$	$x = -109 / 2$

## 21.

1.	$5x + 12 = 11x - 88$	$x = 50 / 3$
2.	$5x + 7 = 6x - 6$	$x = 13$
3.	$2 - 12x = 4x - 7$	$x = 9 / 16$
4.	$9 - 7x = 11x - 64$	$x = 73 / 18$
5.	$6x + 6 = 8x - 60$	$x = 33$
6.	$3x + 11 = 6x - 80$	$x = 91 / 3$
7.	$7 - 11x = 8x - 24$	$x = 31 / 19$
8.	$12 - 3x = 12x - 88$	$x = 20 / 3$
9.	$5 - 6x = 2x - 12$	$x = 17 / 8$
10.	$2x + 8 = 8x - 21$	$x = 29 / 6$
11.	$11x + 10 = 10x - 36$	$x = -46$
12.	$5 - x = 2x - 48$	$x = 53 / 3$
13.	$7x + 4 = 8x - 6$	$x = 10$
14.	$3 - 7x = 3x - 18$	$x = 21 / 10$
15.	$8x + 1 = x$	$x = -1 / 7$
16.	$11x + 2 = 3x - 10$	$x = -3 / 2$
17.	$7x + 6 = 4x - 10$	$x = -16 / 3$
18.	$9x + 5 = 5x - 44$	$x = -49 / 4$
19.	$6 - 4x = 8x - 25$	$x = 31 / 12$
20.	$8 - 12x = 10x - 7$	$x = 15 / 22$
21.	$10x + 3 = x - 14$	$x = -17 / 9$
22.	$11x + 6 = 12x - 20$	$x = 26$
23.	$6x + 7 = 7x - 24$	$x = 31$
24.	$8 - 11x = 9x - 7$	$x = 3 / 4$
25.	$5x + 9 = 4x - 8$	$x = -17$
26.	$5 - 4x = 2x - 44$	$x = 49 / 6$
27.	$11x + 7 = 10x - 72$	$x = -79$
28.	$9x + 8 = 10x - 14$	$x = 22$
29.	$2 - 3x = 5x - 6$	$x = 1$
30.	$3 - 9x = 7x - 20$	$x = 23 / 16$

22.

1.	$8x + 12 = 10x - 132$	$x = 72$
2.	$1 - 5x = 8x$	$x = 1/13$
3.	$4 - 12x = x - 33$	$x = 37/13$
4.	$6 - 10x = x - 30$	$x = 36/11$
5.	$10x + 4 = 7x - 36$	$x = -40/3$
6.	$6x + 3 = 10x - 2$	$x = 5/4$
7.	$10x + 10 = 5x - 27$	$x = -37/5$
8.	$2x + 7 = 12x - 36$	$x = 43/10$
9.	$12 - 11x = 4x - 33$	$x = 3$
10.	$5 - 8x = 11x - 32$	$x = 37/19$
11.	$5x + 3 = 12x - 6$	$x = 9/7$
12.	$2x + 3 = 10x - 4$	$x = 7/8$
13.	$3x + 10 = 9x - 90$	$x = 50/3$
14.	$7x + 8 = 3x - 70$	$x = -39/2$
15.	$4x + 1 = 2x$	$x = -1/2$
16.	$2 - 12x = 11x - 4$	$x = 6/23$
17.	$x + 11 = 2x - 50$	$x = 61$
18.	$10 - 5x = 10x - 27$	$x = 37/15$
19.	$2x + 5 = 3x - 40$	$x = 45$
20.	$8x + 10 = 9x - 18$	$x = 28$
21.	$x + 2 = 11x - 12$	$x = 7/5$
22.	$9x + 7 = 3x - 36$	$x = -43/6$
23.	$8x + 5 = x - 24$	$x = -29/7$
24.	$11x + 6 = 12x - 5$	$x = 11$
25.	$7x + 2 = 2x - 3$	$x = -1$
26.	$3 - 10x = 3x - 14$	$x = 17/13$
27.	$x + 7 = 3x - 48$	$x = 55/2$
28.	$3x + 6 = 8x - 60$	$x = 66/5$
29.	$7 - 11x = 11x - 18$	$x = 25/22$
30.	$4x + 11 = 10x - 70$	$x = 27/2$

## 23.

1.	$7x + 3 = 8x - 8$	$x = 11$
2.	$5 - 2x = 6x - 12$	$x = 17 / 8$
3.	$1 - 3x = 5x$	$x = 1 / 8$
4.	$7x + 1 = 3x$	$x = -1 / 4$
5.	$8 - 9x = 2x - 56$	$x = 64 / 11$
6.	$8 - x = x - 49$	$x = 57 / 2$
7.	$1 - 5x = 12x$	$x = 1 / 17$
8.	$6 - 6x = 8x - 45$	$x = 51 / 14$
9.	$x + 12 = 11x - 44$	$x = 28 / 5$
10.	$3x + 1 = 8x$	$x = 1 / 5$
11.	$4x + 12 = 10x - 77$	$x = 89 / 6$
12.	$6 - 3x = x - 20$	$x = 13 / 2$
13.	$5 - x = 9x - 20$	$x = 5 / 2$
14.	$8 - 6x = 4x - 84$	$x = 46 / 5$
15.	$4 - 11x = 9x - 9$	$x = 13 / 20$
16.	$7x + 1 = 10x$	$x = 1 / 3$
17.	$12x + 7 = 2x - 24$	$x = -31 / 10$
18.	$3x + 2 = 6x - 2$	$x = 4 / 3$
19.	$7x + 3 = 10x - 20$	$x = 23 / 3$
20.	$3 - 11x = 7x - 10$	$x = 13 / 18$
21.	$1 - 6x = x$	$x = 1 / 7$
22.	$5 - 11x = 5x - 48$	$x = 53 / 16$
23.	$1 - 5x = 3x$	$x = 1 / 8$
24.	$x + 1 = 11x$	$x = 1 / 10$
25.	$3x + 7 = 8x - 6$	$x = 13 / 5$
26.	$3 - 11x = 12x - 8$	$x = 11 / 23$
27.	$9x + 6 = x - 40$	$x = -23 / 4$
28.	$3x + 5 = 7x - 36$	$x = 41 / 4$
29.	$10x + 6 = 11x - 50$	$x = 56$
30.	$8x + 10 = 10x - 99$	$x = 109 / 2$

24.

1.	$9x + 12 = 2x - 99$	$x = -111 / 7$
2.	$5x + 3 = 11x - 8$	$x = 11 / 6$
3.	$12 - 9x = 2x - 66$	$x = 78 / 11$
4.	$9x + 8 = 10x - 7$	$x = 15$
5.	$6x + 2 = 4x - 12$	$x = -7$
6.	$12 - 3x = 10x - 99$	$x = 111 / 13$
7.	$5x + 4 = 9x - 6$	$x = 5 / 2$
8.	$10 - 9x = 7x - 54$	$x = 4$
9.	$1 - x = 5x$	$x = 1 / 6$
10.	$9x + 7 = 12x - 30$	$x = 37 / 3$
11.	$1 - 6x = 9x$	$x = 1 / 15$
12.	$11 - 3x = 3x - 60$	$x = 71 / 6$
13.	$3x + 11 = 9x - 20$	$x = 31 / 6$
14.	$9x + 7 = 4x - 72$	$x = -79 / 5$
15.	$8x + 6 = 5x - 55$	$x = -61 / 3$
16.	$7 - 5x = 6x - 6$	$x = 13 / 11$
17.	$11 - 12x = 11x - 60$	$x = 71 / 23$
18.	$1 - 11x = 8x$	$x = 1 / 19$
19.	$2 - 11x = 11x - 1$	$x = 3 / 22$
20.	$6x + 8 = 11x - 21$	$x = 29 / 5$
21.	$8 - 2x = 10x - 35$	$x = 43 / 12$
22.	$10 - 11x = 7x - 63$	$x = 73 / 18$
23.	$8x + 4 = 9x - 36$	$x = 40$
24.	$12 - 5x = 9x - 99$	$x = 111 / 14$
25.	$6x + 7 = 12x - 66$	$x = 73 / 6$
26.	$9 - 2x = 2x - 48$	$x = 57 / 4$
27.	$7x + 2 = 8x - 12$	$x = 14$
28.	$10 - 6x = 7x - 108$	$x = 118 / 13$
29.	$12 - 9x = 3x - 44$	$x = 14 / 3$
30.	$3x + 3 = 12x - 18$	$x = 7 / 3$

## 25.

1.	$8 - 6x = x - 28$	$x = 36 / 7$
2.	$8x + 1 = 6x$	$x = -1 / 2$
3.	$7x + 9 = 2x - 40$	$x = -49 / 5$
4.	$9x + 9 = 4x - 40$	$x = -49 / 5$
5.	$1 - 4x = 8x$	$x = 1 / 12$
6.	$6x + 3 = 5x - 24$	$x = -27$
7.	$4 - 7x = 4x - 6$	$x = 10 / 11$
8.	$7x + 7 = 5x - 30$	$x = -37 / 2$
9.	$10 - 2x = 9x - 63$	$x = 73 / 11$
10.	$5 - 8x = 5x - 24$	$x = 29 / 13$
11.	$3x + 3 = 4x - 12$	$x = 15$
12.	$10 - 11x = 7x - 72$	$x = 41 / 9$
13.	$9 - 12x = 5x - 8$	$x = 1$
14.	$1 - 7x = 3x$	$x = 1 / 10$
15.	$2 - 6x = 7x - 3$	$x = 5 / 13$
16.	$4 - x = 5x - 36$	$x = 20 / 3$
17.	$6x + 8 = 9x - 56$	$x = 64 / 3$
18.	$4 - x = 5x - 33$	$x = 37 / 6$
19.	$4 - 5x = 6x - 18$	$x = 2$
20.	$9 - 11x = 9x - 32$	$x = 41 / 20$
21.	$1 - 12x = 5x$	$x = 1 / 17$
22.	$7x + 6 = 5x - 20$	$x = -13$
23.	$5 - 2x = 3x - 20$	$x = 5$
24.	$10x + 2 = 8x - 3$	$x = -5 / 2$
25.	$10x + 12 = 12x - 11$	$x = 23 / 2$
26.	$6 - 5x = 4x - 60$	$x = 22 / 3$
27.	$8 - 3x = 9x - 7$	$x = 5 / 4$
28.	$8x + 9 = 12x - 40$	$x = 49 / 4$
29.	$9 - x = 10x - 24$	$x = 3$
30.	$12 - 2x = x - 55$	$x = 67 / 3$



26.

1.	$12 - 4x = 3x - 77$	$x = 89 / 7$
2.	$10x + 7 = 11x - 66$	$x = 73$
3.	$5 - 11x = 8x - 12$	$x = 17 / 19$
4.	$8x + 8 = 11x - 77$	$x = 85 / 3$
5.	$x + 8 = 11x - 14$	$x = 11 / 5$
6.	$5x + 6 = x - 10$	$x = -4$
7.	$6x + 9 = 12x - 80$	$x = 89 / 6$
8.	$12x + 12 = 7x - 55$	$x = -67 / 5$
9.	$x + 8 = 11x - 28$	$x = 18 / 5$
10.	$2 - 5x = 6x - 8$	$x = 10 / 11$
11.	$2 - 9x = 8x - 4$	$x = 6 / 17$
12.	$9x + 7 = 5x - 66$	$x = -73 / 4$
13.	$11x + 5 = 2x - 44$	$x = -49 / 9$
14.	$2 - 12x = 11x - 2$	$x = 4 / 23$
15.	$6 - 7x = 12x - 45$	$x = 51 / 19$
16.	$9x + 2 = 10x - 3$	$x = 5$
17.	$11x + 5 = 12x - 48$	$x = 53$
18.	$2x + 11 = 11x - 120$	$x = 131 / 9$
19.	$3x + 1 = 10x$	$x = 1 / 7$
20.	$3 - 5x = 2x - 2$	$x = 5 / 7$
21.	$3x + 9 = 12x - 72$	$x = 9$
22.	$8x + 12 = 3x - 44$	$x = -56 / 5$
23.	$8x + 11 = 9x - 20$	$x = 31$
24.	$11 - 8x = 7x - 90$	$x = 101 / 15$
25.	$5 - 3x = 8x - 8$	$x = 13 / 11$
26.	$1 - x = 4x$	$x = 1 / 5$
27.	$1 - 3x = 2x$	$x = 1 / 5$
28.	$6 - 10x = 10x - 45$	$x = 51 / 20$
29.	$9x + 11 = 6x - 20$	$x = -31 / 3$
30.	$10 - 4x = 12x - 9$	$x = 19 / 16$

27.

1.	$7 - x = 4x - 48$	$x = 11$
2.	$7x + 10 = 3x - 36$	$x = -23 / 2$
3.	$6 - 6x = 7x - 55$	$x = 61 / 13$
4.	$5 - 4x = 7x - 8$	$x = 13 / 11$
5.	$8 - 2x = 12x - 14$	$x = 11 / 7$
6.	$11x + 1 = 12x$	$x = 1$
7.	$6x + 11 = 2x - 70$	$x = -81 / 4$
8.	$2x + 1 = 10x$	$x = 1 / 8$
9.	$2x + 2 = 4x - 12$	$x = 7$
10.	$12x + 3 = 13x - 12$	$x = 15$
11.	$9 - 3x = 7x - 64$	$x = 73 / 10$
12.	$6x + 12 = 7x - 66$	$x = 78$
13.	$7 - 6x = 7x - 66$	$x = 73 / 13$
14.	$5 - 6x = 11x - 20$	$x = 25 / 17$
15.	$4 - 7x = 9x - 6$	$x = 5 / 8$
16.	$4x + 8 = 3x - 56$	$x = -64$
17.	$3x + 5 = 6x - 48$	$x = 53 / 3$
18.	$1 - 2x = x$	$x = 1 / 3$
19.	$3x + 4 = 2x - 18$	$x = -22$
20.	$2 - 7x = 6x - 6$	$x = 8 / 13$
21.	$3x + 11 = 5x - 40$	$x = 51 / 2$
22.	$3x + 7 = 12x - 36$	$x = 43 / 9$
23.	$11x + 10 = 12x - 99$	$x = 109$
24.	$9x + 9 = 10x - 24$	$x = 33$
25.	$3x + 6 = 4x - 55$	$x = 61$
26.	$12 - 3x = 6x - 88$	$x = 100 / 9$
27.	$4x + 3 = 6x - 4$	$x = 7 / 2$
28.	$8x + 11 = 5x - 50$	$x = -61 / 3$
29.	$11 - 2x = 7x - 30$	$x = 41 / 9$
30.	$10x + 11 = 12x - 40$	$x = 51 / 2$

## 28.

1.	$7x + 7 = x - 54$	$x = -61 / 6$
2.	$7x + 1 = 5x$	$x = -1 / 2$
3.	$4 - 2x = x - 3$	$x = 7 / 3$
4.	$2 - 9x = 4x - 8$	$x = 10 / 13$
5.	$3x + 7 = 2x - 24$	$x = -31$
6.	$8x + 9 = 5x - 16$	$x = -25 / 3$
7.	$11x + 3 = 12x - 16$	$x = 19$
8.	$9 - 3x = 3x - 16$	$x = 25 / 6$
9.	$1 - 9x = 7x$	$x = 1 / 16$
10.	$2x + 1 = 3x$	$x = 1$
11.	$12x + 2 = 10x - 7$	$x = -9 / 2$
12.	$5 - 9x = 12x - 40$	$x = 15 / 7$
13.	$3x + 2 = 9x - 5$	$x = 7 / 6$
14.	$4x + 12 = 5x - 33$	$x = 45$
15.	$x + 11 = 5x - 40$	$x = 51 / 4$
16.	$12 - 12x = 2x - 66$	$x = 39 / 7$
17.	$5x + 2 = 10x - 5$	$x = 7 / 5$
18.	$9 - 11x = 7x - 32$	$x = 41 / 18$
19.	$8 - 8x = 4x - 7$	$x = 5 / 4$
20.	$12x + 2 = 8x - 11$	$x = -13 / 4$
21.	$2 - 5x = 8x - 6$	$x = 8 / 13$
22.	$12x + 11 = 5x - 10$	$x = -3$
23.	$4x + 12 = 9x - 55$	$x = 67 / 5$
24.	$8x + 8 = 2x - 28$	$x = -6$
25.	$2x + 7 = 9x - 72$	$x = 79 / 7$
26.	$10 - 10x = 12x - 36$	$x = 23 / 11$
27.	$12x + 8 = 9x - 84$	$x = -92 / 3$
28.	$8x + 7 = 4x - 12$	$x = -19 / 4$
29.	$10 - 11x = 7x - 45$	$x = 55 / 18$
30.	$9x + 5 = 7x - 36$	$x = -41 / 2$

29.

1.	$5 - 2x = 3x - 28$	$x = 33 / 5$
2.	$10 - 3x = 11x - 18$	$x = 2$
3.	$4x + 6 = 9x - 20$	$x = 26 / 5$
4.	$4 - 6x = 6x - 15$	$x = 19 / 12$
5.	$x + 1 = 9x$	$x = 1 / 8$
6.	$7x + 11 = 5x - 70$	$x = -81 / 2$
7.	$3x + 1 = 2x$	$x = -1$
8.	$7 - 12x = 7x - 66$	$x = 73 / 19$
9.	$12x + 4 = 2x - 27$	$x = -31 / 10$
10.	$2x + 10 = 3x - 45$	$x = 55$
11.	$5 - 10x = 12x - 32$	$x = 37 / 22$
12.	$7 - 6x = 7x - 30$	$x = 37 / 13$
13.	$4 - 4x = 7x - 21$	$x = 25 / 11$
14.	$6 - 5x = 11x - 5$	$x = 11 / 16$
15.	$4x + 12 = 5x - 110$	$x = 122$
16.	$2 - 9x = 2x - 4$	$x = 6 / 11$
17.	$7x + 8 = 3x - 14$	$x = -11 / 2$
18.	$8 - 10x = 8x - 14$	$x = 11 / 9$
19.	$2x + 7 = 3x - 30$	$x = 37$
20.	$12 - 9x = 4x - 132$	$x = 144 / 13$
21.	$4 - 10x = 4x - 15$	$x = 19 / 14$
22.	$4x + 8 = 11x - 21$	$x = 29 / 7$
23.	$12 - 2x = 10x - 132$	$x = 12$
24.	$8 - 12x = 12x - 7$	$x = 5 / 8$
25.	$4x + 4 = 11x - 36$	$x = 40 / 7$
26.	$3 - 8x = 4x - 10$	$x = 13 / 12$
27.	$1 - 11x = 11x$	$x = 1 / 22$
28.	$12 - 12x = 3x - 88$	$x = 20 / 3$
29.	$10 - 12x = 4x - 9$	$x = 19 / 16$
30.	$5 - 3x = 11x - 36$	$x = 41 / 14$

30.

1.	$2 - 6x = 5x - 10$	$x = 12 / 11$
2.	$6x + 4 = 8x - 30$	$x = 17$
3.	$12 - 2x = 12x - 66$	$x = 39 / 7$
4.	$12x + 2 = 13x - 12$	$x = 14$
5.	$8x + 11 = x - 20$	$x = -31 / 7$
6.	$3x + 5 = 6x - 4$	$x = 3$
7.	$10 - 12x = 8x - 27$	$x = 37 / 20$
8.	$9x + 1 = 5x$	$x = -1 / 4$
9.	$10x + 12 = 9x - 33$	$x = -45$
10.	$11 - 10x = 6x - 50$	$x = 61 / 16$
11.	$3 - 8x = 6x - 12$	$x = 15 / 14$
12.	$10 - 11x = 6x - 81$	$x = 91 / 17$
13.	$5x + 5 = 8x - 44$	$x = 49 / 3$
14.	$2 - 2x = 6x - 10$	$x = 3 / 2$
15.	$11x + 4 = 12x - 33$	$x = 37$
16.	$2 - 3x = 7x - 9$	$x = 11 / 10$
17.	$x + 6 = 5x - 20$	$x = 13 / 2$
18.	$3x + 12 = 2x - 22$	$x = -34$
19.	$11x + 11 = 9x - 100$	$x = -111 / 2$
20.	$2 - 9x = 5x - 3$	$x = 5 / 14$
21.	$4x + 6 = 6x - 45$	$x = 51 / 2$
22.	$7 - 12x = 9x - 60$	$x = 67 / 21$
23.	$1 - 2x = 3x$	$x = 1 / 5$
24.	$x + 9 = 2x - 8$	$x = 17$
25.	$x + 3 = 11x - 14$	$x = 17 / 10$
26.	$7 - 5x = 10x - 66$	$x = 73 / 15$
27.	$6x + 10 = 5x - 36$	$x = -46$
28.	$5x + 11 = 11x - 40$	$x = 17 / 2$
29.	$8 - 6x = x - 70$	$x = 78 / 7$
30.	$6 - 6x = 8x - 45$	$x = 51 / 14$