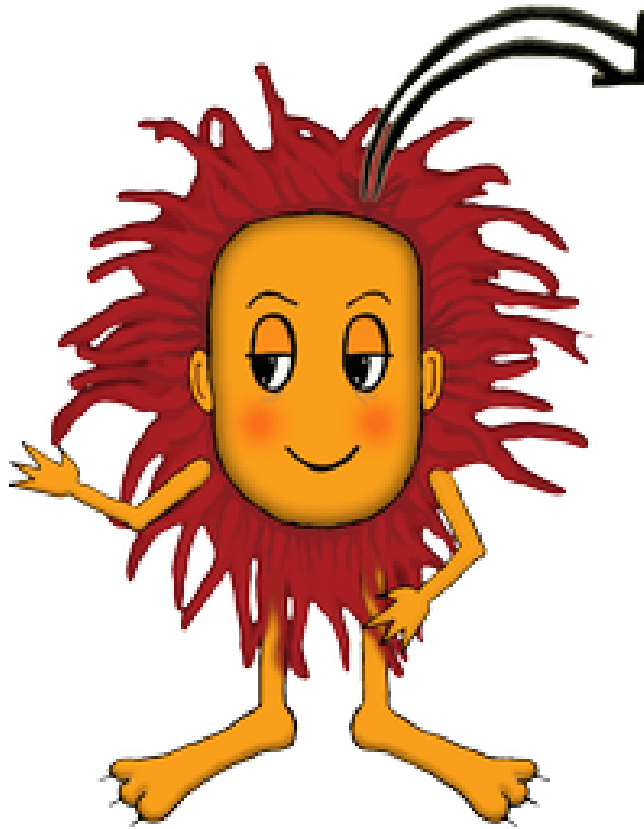


Velika logična pošast



Deljenje decimalnih števil

Izračunaj količnik.

1.

x	y	x:y
90.14	14	
66.35	14	
83.63	29	
68.289	23	
48.899	14	
85.48	21	
35.29	30	
55.5117	28	
53.507	19	
64.74	14	
46.85	15	
26.38	18	
70.8701	13	
46.208	23	
65.759	23	
36.4942	29	
37.542	20	
87.46	26	
45.87	15	
33.75	25	
78.42	18	
82.2810	10	
61.749	16	
16.9022	14	

2.

x	y	x:y
80.49	27	
70.624	10	
37.5112	27	
81.12	16	
83.7313	19	
61.31	18	
12.4110	17	
72.856	19	
55.52	16	
15.65	27	
27.89	25	
39.4487	17	
44.8490	21	
21.9850	18	
49.917	26	
16.9953	30	
70.059	28	
74.675	12	
70.818	16	
51.5929	25	
39.0513	24	
39.1466	19	
34.0882	12	
21.95	13	

3.

x	y	x:y
52.1747	21	
44.111	13	
29.0741	14	
64.15	30	
79.2504	13	
63.24	23	
89.7373	24	
86.035	20	
49.476	24	
51.1201	26	
35.72	18	
79.6471	27	
49.1134	15	
45.41	26	
55.076	14	
82.0295	10	
17.531	29	
24.2778	19	
58.239	25	
48.8412	15	
81.775	27	
15.268	11	
55.430	11	
16.2219	29	

4.

x	y	$x:y$
89.7596	20	
72.0849	20	
41.6248	22	
76.445	17	
60.87	24	
86.0730	15	
27.22	19	
35.8799	23	
39.13	19	
36.956	17	
41.440	13	
37.38	21	
26.99	26	
43.947	28	
88.779	17	
52.26	16	
71.808	26	
57.993	14	
68.24	10	
73.2950	27	
28.861	25	
75.938	11	
69.91	17	
19.52	11	

5.

x	y	$x:y$
70.39	10	
43.544	16	
11.0716	25	
87.6680	15	
10.88	14	
44.5754	18	
22.9930	13	
71.64	11	
74.8003	16	
13.9858	19	
28.663	12	
81.35	29	
40.312	23	
61.52	25	
42.920	25	
69.1059	16	
61.293	13	
12.9272	30	
58.407	18	
29.19	10	
23.1057	17	
68.2629	28	
34.55	13	
10.8375	29	

6.

x	y	x:y
50.39	27	
25.40	23	
74.56	28	
55.4394	13	
55.5510	19	
32.6519	11	
71.251	21	
69.691	28	
26.28	14	
28.466	16	
87.28	27	
14.8562	24	
11.707	16	
20.21	26	
42.09	24	
56.28	22	
15.2827	19	
89.00	27	
30.4825	13	
16.5130	16	
63.5287	10	
72.05	17	
70.67	29	
86.77	25	

7.

x	y	x:y
31.2650	16	
79.58	23	
57.12	30	
80.3670	10	
17.253	10	
84.7618	23	
39.489	24	
80.1539	28	
31.11	16	
90.848	25	
41.26	13	
25.91	12	
77.923	18	
87.36	23	
61.1935	20	
37.9443	16	
85.5335	11	
36.1656	28	
15.1519	14	
19.203	21	
21.4894	16	
40.9895	29	
39.20	15	
68.7672	30	

8.

x	y	$x:y$
26.632	25	
39.2418	16	
67.0388	24	
63.400	18	
15.9219	30	
88.4044	23	
77.6478	24	
63.54	27	
84.16	10	
84.7010	23	
60.19	14	
31.673	22	
90.457	17	
62.650	29	
85.6127	16	
55.50	12	
70.938	25	
14.6542	27	
16.3547	12	
68.98	20	
42.26	23	
44.45	14	
19.41	15	
77.57	27	

9.

x	y	$x:y$
58.13	17	
89.9438	13	
56.7585	28	
15.610	22	
41.818	29	
88.45	22	
13.6116	16	
66.524	17	
89.1451	11	
44.9885	20	
35.742	18	
17.4949	19	
39.7714	18	
15.115	16	
33.836	18	
52.0311	13	
84.437	18	
71.4757	12	
71.6119	30	
51.898	14	
76.035	12	
11.875	18	
68.98	20	
32.25	26	

10.

x	y	$x:y$
31.091	26	
23.87	27	
52.383	24	
75.50	23	
37.05	24	
69.8265	20	
86.775	23	
76.994	29	
81.80	23	
16.9642	27	
36.218	25	
82.87	17	
45.350	13	
72.45	29	
72.41	12	
74.2274	18	
25.79	18	
48.770	22	
70.63	21	
64.415	23	
48.243	19	
88.176	27	
66.7427	13	
75.6322	14	

11.

x	y	$x:y$
58.798	23	
84.911	12	
33.70	28	
55.94	26	
79.3842	16	
35.086	28	
79.980	14	
88.220	24	
56.3901	17	
70.17	22	
84.358	18	
38.643	18	
48.11	30	
85.722	17	
35.53	21	
56.5259	18	
56.74	25	
25.7271	28	
57.005	16	
15.584	10	
83.8312	29	
33.681	21	
87.449	17	
53.397	19	

12.

x	y	x:y
90.98	21	
55.56	19	
74.474	19	
46.31	14	
47.210	27	
17.64	26	
27.15	24	
18.372	27	
29.7391	26	
86.92	27	
82.7763	23	
64.62	30	
16.17	17	
19.8740	17	
16.355	30	
57.60	23	
67.84	18	
15.3137	14	
31.540	28	
57.100	10	
54.79	23	
67.17	22	
80.9355	22	
13.5847	18	

13.

x	y	$x:y$
71.231	23	
21.84	24	
84.1652	28	
22.7733	22	
16.00	22	
23.7758	21	
78.37	28	
10.2533	20	
50.453	24	
74.1821	13	
55.0101	29	
52.43	15	
50.5618	12	
39.5638	30	
48.1519	24	
38.675	11	
40.964	23	
35.066	13	
26.76	18	
65.90	29	
68.2679	12	
73.90	24	
83.592	12	
61.6081	13	

14.

x	y	$x:y$
11.4929	18	
59.09	10	
43.73	10	
70.5981	25	
75.0816	10	
32.048	17	
38.5669	16	
41.61	16	
24.59	17	
89.828	19	
73.984	13	
20.57	19	
38.7698	10	
55.84	14	
59.33	27	
50.291	25	
16.7551	14	
80.115	13	
31.96	29	
83.1235	20	
33.9587	12	
19.9104	15	
58.78	19	
19.349	13	

15.

x	y	$x:y$
72.07	19	
83.9211	28	
74.80	30	
23.492	11	
29.07	11	
29.824	19	
73.941	18	
48.611	29	
28.47	28	
38.772	30	
43.4630	10	
84.010	12	
41.2400	27	
60.24	29	
85.531	13	
53.00	18	
10.8309	13	
71.54	30	
20.901	23	
62.4203	28	
58.92	10	
47.6028	15	
63.517	30	
46.32	20	

16.

x	y	$x:y$
35.958	14	
24.43	28	
56.2113	22	
39.44	20	
11.095	11	
89.1364	17	
33.774	28	
75.41	22	
85.6265	29	
77.787	11	
65.0794	28	
65.96	15	
59.8035	27	
44.506	23	
58.5736	13	
33.0416	18	
52.6728	26	
17.89	16	
58.4968	24	
55.82	14	
84.2393	15	
37.852	10	
25.14	30	
76.1580	19	

17.

x	y	x:y
75.55	20	
17.79	10	
27.415	11	
71.54	16	
44.249	25	
51.34	28	
86.41	19	
11.0258	29	
55.13	16	
57.344	17	
22.79	11	
22.8626	14	
69.1679	16	
32.3720	18	
27.76	11	
15.6656	28	
18.965	26	
42.3660	30	
11.170	26	
60.5487	19	
14.564	21	
40.585	16	
42.5870	29	
77.60	22	

18.

x	y	$x:y$
35.966	20	
11.32	13	
51.7926	16	
39.19	17	
65.834	26	
41.143	27	
81.87	28	
41.45	23	
16.4300	17	
21.4098	13	
65.1630	23	
83.4062	19	
87.01	30	
87.295	21	
36.7651	23	
40.042	17	
13.3430	22	
22.750	16	
33.886	27	
55.870	19	
13.52	15	
60.83	26	
25.32	21	
41.411	18	

19.

x	y	x:y
24.13	25	
44.86	23	
72.4232	19	
70.7933	30	
83.89	12	
81.0042	14	
17.4375	11	
50.229	17	
70.442	18	
41.62	29	
61.60	10	
57.04	17	
82.8885	23	
23.500	17	
59.3873	26	
76.06	23	
38.07	12	
71.49	11	
62.994	27	
52.02	15	
59.114	18	
87.857	27	
70.310	11	
58.8383	27	

20.

x	y	x:y
70.131	22	
66.300	23	
17.02	28	
71.72	29	
35.6180	13	
42.64	17	
73.38	28	
45.8110	20	
89.0070	17	
51.71	10	
64.948	18	
68.188	20	
30.27	27	
80.2417	22	
57.43	20	
89.605	20	
50.85	26	
29.298	11	
80.6287	23	
63.4276	12	
15.7244	23	
11.5156	16	
46.965	28	
58.207	26	

21.

x	y	$x:y$
19.5024	15	
32.291	21	
21.47	18	
70.344	14	
35.91	20	
46.0949	27	
35.95	30	
83.756	10	
15.3646	19	
31.512	16	
56.9817	20	
61.590	21	
75.75	10	
69.242	20	
79.88	28	
70.010	14	
36.44	29	
54.74	20	
35.8930	22	
29.32	21	
32.369	22	
55.6710	16	
25.714	22	
73.31	13	

22.

x	y	$x:y$
74.797	17	
47.82	30	
62.095	13	
57.71	16	
18.515	26	
40.655	19	
63.317	27	
20.109	14	
90.982	19	
45.28	28	
15.191	17	
66.243	27	
52.968	20	
42.37	16	
74.5552	26	
82.5515	16	
46.41	27	
50.1854	22	
86.37	16	
16.27	27	
78.0232	22	
11.48	19	
54.9129	20	
13.013	28	

23.

x	y	$x:y$
81.3918	17	
39.46	24	
16.744	12	
31.1932	27	
15.5535	28	
86.3489	30	
57.703	12	
84.69	16	
44.6577	19	
80.22	28	
46.631	22	
48.694	28	
30.71	26	
38.79	18	
34.26	20	
25.990	18	
19.4550	20	
38.72	15	
39.10	21	
15.766	19	
75.77	10	
39.04	17	
75.59	30	
25.9653	30	

24.

x	y	$x:y$
81.32	13	
54.121	23	
67.55	17	
63.0354	24	
85.700	22	
63.96	16	
23.829	22	
22.99	20	
30.11	12	
60.739	25	
50.53	24	
33.689	18	
53.40	17	
18.6075	29	
64.77	24	
32.44	27	
62.94	30	
41.24	24	
31.828	13	
64.0887	27	
82.93	16	
19.406	28	
28.99	20	
79.33	29	

25.

x	y	$x:y$
59.2377	23	
65.10	27	
64.9278	10	
71.519	25	
19.9701	21	
81.2209	12	
17.48	30	
74.42	16	
68.673	29	
77.29	14	
26.13	15	
58.360	26	
87.174	25	
12.023	11	
30.7130	21	
38.0778	17	
38.25	12	
82.524	28	
70.263	12	
44.318	13	
35.297	11	
32.9309	23	
32.58	16	
24.07	14	

26.

x	y	$x:y$
77.723	18	
12.5032	26	
70.368	20	
34.6491	22	
24.91	10	
84.9365	23	
87.302	13	
51.0622	21	
15.680	26	
81.355	28	
57.31	24	
41.474	30	
51.82	10	
50.174	17	
82.676	30	
31.732	19	
75.24	16	
60.633	19	
80.955	21	
17.67	14	
56.5296	28	
62.0742	22	
10.861	13	
76.3708	19	

27.

x	y	x:y
63.830	20	
47.11	18	
41.1913	28	
14.8715	22	
84.02	23	
16.1236	12	
90.6579	19	
34.22	14	
52.564	19	
45.028	19	
43.021	20	
54.8177	30	
19.4565	20	
83.16	15	
41.265	29	
41.329	14	
79.3002	26	
39.188	12	
54.3108	25	
82.5037	16	
24.521	12	
86.030	28	
80.902	17	
73.22	15	

28.

x	y	x:y
84.061	29	
56.340	30	
78.87	13	
18.49	27	
55.6248	28	
28.7521	12	
67.8810	12	
56.83	27	
69.05	18	
47.708	18	
82.842	20	
38.16	11	
68.615	25	
19.726	18	
74.41	13	
15.011	19	
52.377	22	
56.1689	14	
27.14	18	
82.16	12	
81.27	19	
13.1092	28	
28.291	17	
41.978	15	

29.

x	y	x:y
39.73	14	
69.728	25	
56.1141	16	
85.78	22	
59.416	25	
77.17	25	
28.2511	20	
14.320	15	
42.72	15	
67.172	30	
55.7760	22	
76.524	30	
23.80	18	
13.33	30	
14.20	21	
38.1912	19	
26.8879	13	
36.52	23	
33.903	11	
24.518	12	
63.23	11	
86.7008	13	
81.4804	10	
71.377	20	

30.

x	y	x:y
51.8343	27	
39.0562	16	
70.233	18	
52.775	21	
24.1318	17	
67.05	12	
54.253	24	
52.006	24	
77.09	19	
27.13	24	
90.4285	11	
38.884	29	
30.63	17	
66.43	26	
54.4971	29	
36.0678	10	
52.9858	27	
71.1529	17	
47.2766	22	
73.05	15	
89.2940	13	
57.83	10	
38.73	23	
86.7700	20	

Rešitve:

1.

x	y	x:y
90.14	14	6.438571
66.35	14	4.739286
83.63	29	2.883793
68.289	23	2.9690870
48.899	14	3.4927857
85.48	21	4.070476
35.29	30	1.176333
55.5117	28	1.98256071
53.507	19	2.8161579
64.74	14	4.624286
46.85	15	3.123333
26.38	18	1.465556
70.8701	13	5.45154615
46.208	23	2.0090435
65.759	23	2.8590870
36.4942	29	1.25842069
37.542	20	1.8771000
87.46	26	3.363846
45.87	15	3.058000
33.75	25	1.350000
78.42	18	4.356667
82.2810	10	8.22810000
61.749	16	3.8593125
16.9022	14	1.20730000

2.

x	y	x:y
80.49	27	2.981111
70.624	10	7.0624000
37.5112	27	1.38930370
81.12	16	5.070000
83.7313	19	4.40691053
61.31	18	3.406111
12.4110	17	0.73005882
72.856	19	3.8345263
55.52	16	3.470000
15.65	27	0.579630
27.89	25	1.115600
39.4487	17	2.32051176
44.8490	21	2.13566667
21.9850	18	1.22138889
49.917	26	1.9198846
16.9953	30	0.56651000
70.059	28	2.5021071
74.675	12	6.2229167
70.818	16	4.4261250
51.5929	25	2.06371600
39.0513	24	1.62713750
39.1466	19	2.06034737
34.0882	12	2.84068333
21.95	13	1.688462

3.

x	y	$x:y$
52.1747	21	2.48450952
44.111	13	3.3931538
29.0741	14	2.07672143
64.15	30	2.138333
79.2504	13	6.09618462
63.24	23	2.749565
89.7373	24	3.73905417
86.035	20	4.3017500
49.476	24	2.0615000
51.1201	26	1.96615769
35.72	18	1.984444
79.6471	27	2.94989259
49.1134	15	3.27422667
45.41	26	1.746538
55.076	14	3.9340000
82.0295	10	8.20295000
17.531	29	0.6045172
24.2778	19	1.27777895
58.239	25	2.3295600
48.8412	15	3.25608000
81.775	27	3.0287037
15.268	11	1.3880000
55.430	11	5.0390909
16.2219	29	0.55937586

4.

x	y	$x:y$
89.7596	20	4.48798000
72.0849	20	3.60424500
41.6248	22	1.89203636
76.445	17	4.4967647
60.87	24	2.536250
86.0730	15	5.73820000
27.22	19	1.432632
35.8799	23	1.55999565
39.13	19	2.059474
36.956	17	2.1738824
41.440	13	3.1876923
37.38	21	1.780000
26.99	26	1.038077
43.947	28	1.5695357
88.779	17	5.2222941
52.26	16	3.266250
71.808	26	2.7618462
57.993	14	4.1423571
68.24	10	6.824000
73.2950	27	2.71462963
28.861	25	1.1544400
75.938	11	6.9034545
69.91	17	4.112353
19.52	11	1.774545

5.

x	y	$x:y$
70.39	10	7.039000
43.544	16	2.7215000
11.0716	25	0.44286400
87.6680	15	5.84453333
10.88	14	0.777143
44.5754	18	2.47641111
22.9930	13	1.76869231
71.64	11	6.512727
74.8003	16	4.67501875
13.9858	19	0.73609474
28.663	12	2.3885833
81.35	29	2.805172
40.312	23	1.7526957
61.52	25	2.460800
42.920	25	1.7168000
69.1059	16	4.31911875
61.293	13	4.7148462
12.9272	30	0.43090667
58.407	18	3.2448333
29.19	10	2.919000
23.1057	17	1.35915882
68.2629	28	2.43796071
34.55	13	2.657692
10.8375	29	0.37370690

6.

x	y	x:y
50.39	27	1.866296
25.40	23	1.104348
74.56	28	2.662857
55.4394	13	4.26456923
55.5510	19	2.92373684
32.6519	11	2.96835455
71.251	21	3.3929048
69.691	28	2.4889643
26.28	14	1.877143
28.466	16	1.7791250
87.28	27	3.232593
14.8562	24	0.61900833
11.707	16	0.7316875
20.21	26	0.777308
42.09	24	1.753750
56.28	22	2.558182
15.2827	19	0.80435263
89.00	27	3.296296
30.4825	13	2.34480769
16.5130	16	1.03206250
63.5287	10	6.35287000
72.05	17	4.238235
70.67	29	2.436897
86.77	25	3.470800

7.

x	y	$x:y$
31.2650	16	1.95406250
79.58	23	3.460000
57.12	30	1.904000
80.3670	10	8.03670000
17.253	10	1.7253000
84.7618	23	3.68529565
39.489	24	1.6453750
80.1539	28	2.86263929
31.11	16	1.944375
90.848	25	3.6339200
41.26	13	3.173846
25.91	12	2.159167
77.923	18	4.3290556
87.36	23	3.798261
61.1935	20	3.05967500
37.9443	16	2.37151875
85.5335	11	7.77577273
36.1656	28	1.29162857
15.1519	14	1.08227857
19.203	21	0.9144286
21.4894	16	1.34308750
40.9895	29	1.41343103
39.20	15	2.613333
68.7672	30	2.29224000

8.

x	y	$x:y$
26.632	25	1.0652800
39.2418	16	2.45261250
67.0388	24	2.79328333
63.400	18	3.5222222
15.9219	30	0.53073000
88.4044	23	3.84366957
77.6478	24	3.23532500
63.54	27	2.353333
84.16	10	8.416000
84.7010	23	3.68265217
60.19	14	4.299286
31.673	22	1.4396818
90.457	17	5.3210000
62.650	29	2.1603448
85.6127	16	5.35079375
55.50	12	4.625000
70.938	25	2.8375200
14.6542	27	0.54274815
16.3547	12	1.36289167
68.98	20	3.449000
42.26	23	1.837391
44.45	14	3.175000
19.41	15	1.294000
77.57	27	2.872963

9.

x	y	$x:y$
58.13	17	3.419412
89.9438	13	6.91875385
56.7585	28	2.02708929
15.610	22	0.7095455
41.818	29	1.4420000
88.45	22	4.020455
13.6116	16	0.85072500
66.524	17	3.9131765
89.1451	11	8.10410000
44.9885	20	2.24942500
35.742	18	1.9856667
17.4949	19	0.92078421
39.7714	18	2.20952222
15.115	16	0.9446875
33.836	18	1.8797778
52.0311	13	4.00239231
84.437	18	4.6909444
71.4757	12	5.95630833
71.6119	30	2.38706333
51.898	14	3.7070000
76.035	12	6.3362500
11.875	18	0.6597222
68.98	20	3.449000
32.25	26	1.240385

10.

x	y	$x:y$
31.091	26	1.1958077
23.87	27	0.884074
52.383	24	2.1826250
75.50	23	3.282609
37.05	24	1.543750
69.8265	20	3.49132500
86.775	23	3.7728261
76.994	29	2.6549655
81.80	23	3.556522
16.9642	27	0.62830370
36.218	25	1.4487200
82.87	17	4.874706
45.350	13	3.4884615
72.45	29	2.498276
72.41	12	6.034167
74.2274	18	4.12374444
25.79	18	1.432778
48.770	22	2.2168182
70.63	21	3.363333
64.415	23	2.8006522
48.243	19	2.5391053
88.176	27	3.2657778
66.7427	13	5.13405385
75.6322	14	5.40230000

11.

x	y	$x:y$
58.798	23	2.5564348
84.911	12	7.0759167
33.70	28	1.203571
55.94	26	2.151538
79.3842	16	4.96151250
35.086	28	1.2530714
79.980	14	5.7128571
88.220	24	3.6758333
56.3901	17	3.31706471
70.17	22	3.189545
84.358	18	4.6865556
38.643	18	2.1468333
48.11	30	1.603667
85.722	17	5.0424706
35.53	21	1.691905
56.5259	18	3.14032778
56.74	25	2.269600
25.7271	28	0.91882500
57.005	16	3.5628125
15.584	10	1.5584000
83.8312	29	2.89073103
33.681	21	1.6038571
87.449	17	5.1440588
53.397	19	2.8103684

12.

x	y	$x:y$
90.98	21	4.332381
55.56	19	2.924211
74.474	19	3.9196842
46.31	14	3.307857
47.210	27	1.7485185
17.64	26	0.678462
27.15	24	1.131250
18.372	27	0.6804444
29.7391	26	1.14381154
86.92	27	3.219259
82.7763	23	3.59896957
64.62	30	2.154000
16.17	17	0.951176
19.8740	17	1.16905882
16.355	30	0.5451667
57.60	23	2.504348
67.84	18	3.768889
15.3137	14	1.09383571
31.540	28	1.1264286
57.100	10	5.7100000
54.79	23	2.382174
67.17	22	3.053182
80.9355	22	3.67888636
13.5847	18	0.75470556

13.

x	y	x:y
71.231	23	3.0970000
21.84	24	0.910000
84.1652	28	3.00590000
22.7733	22	1.03515000
16.00	22	0.727273
23.7758	21	1.13218095
78.37	28	2.798929
10.2533	20	0.51266500
50.453	24	2.1022083
74.1821	13	5.70631538
55.0101	29	1.89690000
52.43	15	3.495333
50.5618	12	4.21348333
39.5638	30	1.31879333
48.1519	24	2.00632917
38.675	11	3.5159091
40.964	23	1.7810435
35.066	13	2.6973846
26.76	18	1.486667
65.90	29	2.272414
68.2679	12	5.68899167
73.90	24	3.079167
83.592	12	6.9660000
61.6081	13	4.73908462

14.

x	y	$x:y$
11.4929	18	0.63849444
59.09	10	5.909000
43.73	10	4.373000
70.5981	25	2.82392400
75.0816	10	7.50816000
32.048	17	1.8851765
38.5669	16	2.41043125
41.61	16	2.600625
24.59	17	1.446471
89.828	19	4.7277895
73.984	13	5.6910769
20.57	19	1.082632
38.7698	10	3.87698000
55.84	14	3.988571
59.33	27	2.197407
50.291	25	2.0116400
16.7551	14	1.19679286
80.115	13	6.1626923
31.96	29	1.102069
83.1235	20	4.15617500
33.9587	12	2.82989167
19.9104	15	1.32736000
58.78	19	3.093684
19.349	13	1.4883846

15.

x	y	$x:y$
72.07	19	3.793158
83.9211	28	2.99718214
74.80	30	2.493333
23.492	11	2.1356364
29.07	11	2.642727
29.824	19	1.5696842
73.941	18	4.1078333
48.611	29	1.6762414
28.47	28	1.016786
38.772	30	1.2924000
43.4630	10	4.34630000
84.010	12	7.0008333
41.2400	27	1.52740741
60.24	29	2.077241
85.531	13	6.5793077
53.00	18	2.944444
10.8309	13	0.83314615
71.54	30	2.384667
20.901	23	0.9087391
62.4203	28	2.22929643
58.92	10	5.892000
47.6028	15	3.17352000
63.517	30	2.1172333
46.32	20	2.316000

16.

x	y	$x:y$
35.958	14	2.5684286
24.43	28	0.872500
56.2113	22	2.55505909
39.44	20	1.972000
11.095	11	1.0086364
89.1364	17	5.24331765
33.774	28	1.2062143
75.41	22	3.427727
85.6265	29	2.95263793
77.787	11	7.0715455
65.0794	28	2.32426429
65.96	15	4.397333
59.8035	27	2.21494444
44.506	23	1.9350435
58.5736	13	4.50566154
33.0416	18	1.83564444
52.6728	26	2.02587692
17.89	16	1.118125
58.4968	24	2.43736667
55.82	14	3.987143
84.2393	15	5.61595333
37.852	10	3.7852000
25.14	30	0.838000
76.1580	19	4.00831579

17.

x	y	x:y
75.55	20	3.777500
17.79	10	1.779000
27.415	11	2.4922727
71.54	16	4.471250
44.249	25	1.7699600
51.34	28	1.833571
86.41	19	4.547895
11.0258	29	0.38020000
55.13	16	3.445625
57.344	17	3.3731765
22.79	11	2.071818
22.8626	14	1.63304286
69.1679	16	4.32299375
32.3720	18	1.79844444
27.76	11	2.523636
15.6656	28	0.55948571
18.965	26	0.7294231
42.3660	30	1.41220000
11.170	26	0.4296154
60.5487	19	3.18677368
14.564	21	0.6935238
40.585	16	2.5365625
42.5870	29	1.46851724
77.60	22	3.527273

18.

x	y	$x:y$
35.966	20	1.7983000
11.32	13	0.870769
51.7926	16	3.23703750
39.19	17	2.305294
65.834	26	2.5320769
41.143	27	1.5238148
81.87	28	2.923929
41.45	23	1.802174
16.4300	17	0.96647059
21.4098	13	1.64690769
65.1630	23	2.83317391
83.4062	19	4.38980000
87.01	30	2.900333
87.295	21	4.1569048
36.7651	23	1.59848261
40.042	17	2.3554118
13.3430	22	0.60650000
22.750	16	1.4218750
33.886	27	1.2550370
55.870	19	2.9405263
13.52	15	0.901333
60.83	26	2.339615
25.32	21	1.205714
41.411	18	2.3006111

19.

x	y	x:y
24.13	25	0.965200
44.86	23	1.950435
72.4232	19	3.81174737
70.7933	30	2.35977667
83.89	12	6.990833
81.0042	14	5.78601429
17.4375	11	1.58522727
50.229	17	2.9546471
70.442	18	3.9134444
41.62	29	1.435172
61.60	10	6.160000
57.04	17	3.355294
82.8885	23	3.60384783
23.500	17	1.3823529
59.3873	26	2.28412692
76.06	23	3.306957
38.07	12	3.172500
71.49	11	6.499091
62.994	27	2.3331111
52.02	15	3.468000
59.114	18	3.2841111
87.857	27	3.2539630
70.310	11	6.3918182
58.8383	27	2.17919630

20.

x	y	x:y
70.131	22	3.1877727
66.300	23	2.8826087
17.02	28	0.607857
71.72	29	2.473103
35.6180	13	2.73984615
42.64	17	2.508235
73.38	28	2.620714
45.8110	20	2.29055000
89.0070	17	5.23570588
51.71	10	5.171000
64.948	18	3.6082222
68.188	20	3.4094000
30.27	27	1.121111
80.2417	22	3.64735000
57.43	20	2.871500
89.605	20	4.4802500
50.85	26	1.955769
29.298	11	2.6634545
80.6287	23	3.50559565
63.4276	12	5.28563333
15.7244	23	0.68366957
11.5156	16	0.71972500
46.965	28	1.6773214
58.207	26	2.2387308

21.

x	y	$x:y$
19.5024	15	1.30016000
32.291	21	1.5376667
21.47	18	1.192778
70.344	14	5.0245714
35.91	20	1.795500
46.0949	27	1.70721852
35.95	30	1.198333
83.756	10	8.3756000
15.3646	19	0.80866316
31.512	16	1.9695000
56.9817	20	2.84908500
61.590	21	2.9328571
75.75	10	7.575000
69.242	20	3.4621000
79.88	28	2.852857
70.010	14	5.0007143
36.44	29	1.256552
54.74	20	2.737000
35.8930	22	1.63150000
29.32	21	1.396190
32.369	22	1.4713182
55.6710	16	3.47943750
25.714	22	1.1688182
73.31	13	5.639231

22.

x	y	x:y
74.797	17	4.3998235
47.82	30	1.594000
62.095	13	4.7765385
57.71	16	3.606875
18.515	26	0.7121154
40.655	19	2.1397368
63.317	27	2.3450741
20.109	14	1.4363571
90.982	19	4.7885263
45.28	28	1.617143
15.191	17	0.8935882
66.243	27	2.4534444
52.968	20	2.6484000
42.37	16	2.648125
74.5552	26	2.86750769
82.5515	16	5.15946875
46.41	27	1.718889
50.1854	22	2.28115455
86.37	16	5.398125
16.27	27	0.602593
78.0232	22	3.54650909
11.48	19	0.604211
54.9129	20	2.74564500
13.013	28	0.4647500

23.

x	y	$x:y$
81.3918	17	4.78775294
39.46	24	1.644167
16.744	12	1.3953333
31.1932	27	1.15530370
15.5535	28	0.55548214
86.3489	30	2.87829667
57.703	12	4.8085833
84.69	16	5.293125
44.6577	19	2.35040526
80.22	28	2.865000
46.631	22	2.1195909
48.694	28	1.7390714
30.71	26	1.181154
38.79	18	2.155000
34.26	20	1.713000
25.990	18	1.4438889
19.4550	20	0.97275000
38.72	15	2.581333
39.10	21	1.861905
15.766	19	0.8297895
75.77	10	7.577000
39.04	17	2.296471
75.59	30	2.519667
25.9653	30	0.86551000

24.

x	y	x:y
81.32	13	6.255385
54.121	23	2.3530870
67.55	17	3.973529
63.0354	24	2.62647500
85.700	22	3.8954545
63.96	16	3.997500
23.829	22	1.0831364
22.99	20	1.149500
30.11	12	2.509167
60.739	25	2.4295600
50.53	24	2.105417
33.689	18	1.8716111
53.40	17	3.141176
18.6075	29	0.64163793
64.77	24	2.698750
32.44	27	1.201481
62.94	30	2.098000
41.24	24	1.718333
31.828	13	2.4483077
64.0887	27	2.37365556
82.93	16	5.183125
19.406	28	0.6930714
28.99	20	1.449500
79.33	29	2.735517

25.

x	y	$x:y$
59.2377	23	2.57555217
65.10	27	2.411111
64.9278	10	6.49278000
71.519	25	2.8607600
19.9701	21	0.95095714
81.2209	12	6.76840833
17.48	30	0.582667
74.42	16	4.651250
68.673	29	2.3680345
77.29	14	5.520714
26.13	15	1.742000
58.360	26	2.2446154
87.174	25	3.4869600
12.023	11	1.0930000
30.7130	21	1.46252381
38.0778	17	2.23987059
38.25	12	3.187500
82.524	28	2.9472857
70.263	12	5.8552500
44.318	13	3.4090769
35.297	11	3.2088182
32.9309	23	1.43177826
32.58	16	2.036250
24.07	14	1.719286

26.

x	y	$x:y$
77.723	18	4.3179444
12.5032	26	0.48089231
70.368	20	3.5184000
34.6491	22	1.57495909
24.91	10	2.491000
84.9365	23	3.69289130
87.302	13	6.7155385
51.0622	21	2.43153333
15.680	26	0.6030769
81.355	28	2.9055357
57.31	24	2.387917
41.474	30	1.3824667
51.82	10	5.182000
50.174	17	2.9514118
82.676	30	2.7558667
31.732	19	1.6701053
75.24	16	4.702500
60.633	19	3.1912105
80.955	21	3.8550000
17.67	14	1.262143
56.5296	28	2.01891429
62.0742	22	2.82155455
10.861	13	0.8354615
76.3708	19	4.01951579

27.

x	y	x:y
63.830	20	3.1915000
47.11	18	2.617222
41.1913	28	1.47111786
14.8715	22	0.67597727
84.02	23	3.653043
16.1236	12	1.34363333
90.6579	19	4.77146842
34.22	14	2.444286
52.564	19	2.7665263
45.028	19	2.3698947
43.021	20	2.1510500
54.8177	30	1.82725667
19.4565	20	0.97282500
83.16	15	5.544000
41.265	29	1.4229310
41.329	14	2.9520714
79.3002	26	3.05000769
39.188	12	3.2656667
54.3108	25	2.17243200
82.5037	16	5.15648125
24.521	12	2.0434167
86.030	28	3.0725000
80.902	17	4.7589412
73.22	15	4.881333

28.

x	y	x:y
84.061	29	2.8986552
56.340	30	1.8780000
78.87	13	6.066923
18.49	27	0.684815
55.6248	28	1.98660000
28.7521	12	2.39600833
67.8810	12	5.65675000
56.83	27	2.104815
69.05	18	3.836111
47.708	18	2.6504444
82.842	20	4.1421000
38.16	11	3.469091
68.615	25	2.7446000
19.726	18	1.0958889
74.41	13	5.723846
15.011	19	0.7900526
52.377	22	2.3807727
56.1689	14	4.01206429
27.14	18	1.507778
82.16	12	6.846667
81.27	19	4.277368
13.1092	28	0.46818571
28.291	17	1.6641765
41.978	15	2.7985333

29.

x	y	x:y
39.73	14	2.837857
69.728	25	2.7891200
56.1141	16	3.50713125
85.78	22	3.899091
59.416	25	2.3766400
77.17	25	3.086800
28.2511	20	1.41255500
14.320	15	0.9546667
42.72	15	2.848000
67.172	30	2.2390667
55.7760	22	2.53527273
76.524	30	2.5508000
23.80	18	1.322222
13.33	30	0.444333
14.20	21	0.676190
38.1912	19	2.01006316
26.8879	13	2.06830000
36.52	23	1.587826
33.903	11	3.0820909
24.518	12	2.0431667
63.23	11	5.748182
86.7008	13	6.66929231
81.4804	10	8.14804000
71.377	20	3.5688500

30.

x	y	x:y
51.8343	27	1.91978889
39.0562	16	2.44101250
70.233	18	3.9018333
52.775	21	2.5130952
24.1318	17	1.41951765
67.05	12	5.587500
54.253	24	2.2605417
52.006	24	2.1669167
77.09	19	4.057368
27.13	24	1.130417
90.4285	11	8.22077273
38.884	29	1.3408276
30.63	17	1.801765
66.43	26	2.555000
54.4971	29	1.87921034
36.0678	10	3.60678000
52.9858	27	1.96243704
71.1529	17	4.18546471
47.2766	22	2.14893636
73.05	15	4.870000
89.2940	13	6.86876923
57.83	10	5.783000
38.73	23	1.683913
86.7700	20	4.33850000